

✦ GEM STATE SURVEYOR ✦

SUMMER | 2021

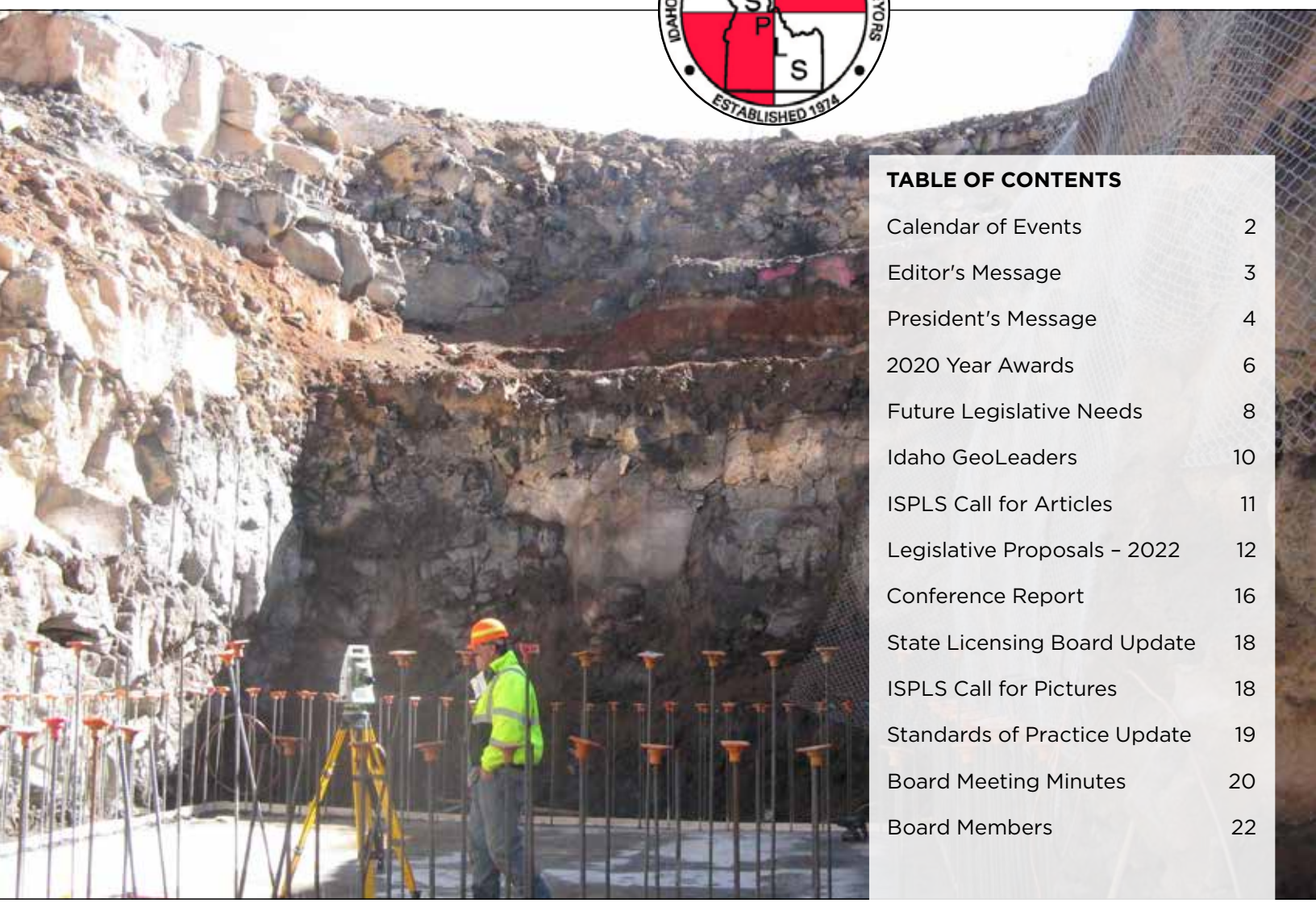


TABLE OF CONTENTS

Calendar of Events	2
Editor's Message	3
President's Message	4
2020 Year Awards	6
Future Legislative Needs	8
Idaho GeoLeaders	10
ISPLS Call for Articles	11
Legislative Proposals - 2022	12
Conference Report	16
State Licensing Board Update	18
ISPLS Call for Pictures	18
Standards of Practice Update	19
Board Meeting Minutes	20
Board Members	22

Photo: George Yerion

Visit our webpage for the latest news

www.idahospls.org

FOLLOW US :

[www.facebook.com/](http://www.facebook.com/idahosocietyofprofessionallandsurveyors/)

idahosocietyofprofessionallandsurveyors/

CALENDAR OF EVENTS

2021

August 14 Board of Governors meeting
McCall

September 15-17 Benchmark Training

September 22-25 NSPS Fall Business Meeting
Oak Brook IL

December 4 Board of Governors meeting
Boise

2022

February 14-18 ISPLS Annual Conference
Moscow

February 14 Board of Governors meeting
Moscow

March 29-April 2 NSPS Spring Business
Meeting and Day on the Hill

October 12-15 NSPS Fall Business Meeting
Tulsa, OK

Photo: Hagen Beckstead



EDITOR: Hagen Beckstead

PUBLISHER: AMS

The *Gem State Surveyor* is a quarterly publication of the Idaho Society of Professional Land Surveyors. It is not copyrighted and articles may be reprinted with due credit. Any article, letters, or other contributions will be accepted and considered for publication regardless of the author's affiliation. Statements of opinion which may be expressed may not necessarily represent the official views of ISPLS unless specifically noted. Article submission must be in digital form. Photographs must be high resolution jpeg files.

ADVERTISING POLICY

Advertisements should be submitted in digital form to fit an 8 ½ x 11 page. Rates for color are as follows:

Advertisements should be submitted in digital form, JPG file (minimum 300 dpi), to fit an 8 ½ x 11 page. Rates are as follows (updated 2013):

Size	Dimensions	B&W Full Year	B&W Single Issue	COLOR Full Year	COLOR Single Issue
Full Page	7.25" w x 9.75" h	\$720.00	\$180.00	\$800.00	\$200.00
1/2 Page	7.25" w x 4.7" h	\$360.00	\$90.00	\$400.00	\$100.00
1/4 Page	3.46" w x 4.7" h	\$180.00	\$45.00	\$200.00	\$ 50.00
Business Card	3.46" w x 2.25" h	\$90.00	\$22.50	\$100.00	\$ 25.00

Sustaining members 10% off above prices.

Publishing an advertisement does not imply endorsement of the advertiser by ISPLS and the editor reserves the right to reject advertising which may be in poor taste or in opposition to the policies of ISPLS.

The *Gem State Surveyor* will advertise equipment stolen from any of our members free of charge. ISPLS will pay \$50.00 for information leading to the arrest and conviction of the perpetrator.

Idaho Society of Professional Land Surveyors

P.O. Box 7886
Boise, Idaho 83707
(208) 658-9970

EDITOR'S MESSAGE

In this Spring 2021 installment of the Gem State Surveyor we recognize two remarkable surveyors in the Gem State who have spent countless hours working to strengthen the profession in Idaho. I would like to personally congratulate both of these men, and say that the awards they have received are very much deserved. I have come to appreciate over the last year how much time, energy, and commitment these men have given, freely, to the ISPLS. Thank you.

I would also like to call our readers' attention to the many important developments which are written about in these pages. A common theme in the ISPLS board meetings over this last year presents itself in this installment: there is a great need for people to be active in the ISPLS, and in a variety of ways. Due to changes in legislation and licensing, and the development of a Standards of Practice, we will be needing people to be involved by offering input, serving on committees, and organizing. These issues will affect us all, but only those who actively participate will have any say in how.

The explosion of growth in our state over the last year has only made these matters more pressing. Last year, many of us wondered what would happen to the economy as a result of Covid-19. This year, many of us are still wondering. One of the least expected affects, to me at any rate, has been the current increase in demand for surveying services and the sky-rocketing property values. But growth is a change which sires more change. This increased demand will almost certainly raise questions about how to meet that demand. How do we get more young people to join the profession? How do we ensure that the quality of work expected of surveyors is preserved by these efforts? If surveyors cannot meet that demand, should engineers or title companies be permitted to produce certain products which have hitherto been the surveyor's domain? All of these questions and more will be raised, and your input will be invaluable.

Thank you to our readers, our advertisers, to those of you who organized the 2021 annual conference, and to all of you who continue to help behind the scenes.

Hagen Beckstead, *Editor GSS*



PRESIDENT'S MESSAGE – SUMMER 2021

Hello friends and fellow professionals! It's crazy that we are already five months into 2021. It's amazing to think of everything that has happened this past year.

Like many of you at this time last year the air was filled with such uncertainty as the pandemic had started, and all the unknown that it involved. Tons of questions entering into our minds. Are we essential or not? We will have to shut down for 14 days or possibly multiple 14 day stints? How would it affect our clients? Housing market? Federal projects? How do we train our employees to properly interact with our clients?

We soon found a new problem as land values started to sky rocket and the public started seeing dollar signs in their backyard, and the phone has been ringing nonstop ever since. We now need to find employees and expand our operations. But where do we find these future employees? As I've discussed this issue with many employers I've found a common issue...there are not a lot of candidates out there. It's more imperative now then ever to break out of our introvert lives and reach out to our future employees. I don't know about you but I don't plan to be working into my 70's because I don't have the future established for my business to continue after I've retired. The partnership between ISPLS and ISU/LCSC needs to be as strong as ever, but what are you doing about it? As Steve Frisbie says at every Board of Governors meeting "The world is run by those that show up". This is so true. I'm lucky that when I started in the profession that I had an employer that encouraged me to get involved and paid for me to attend the annual conferences even before I was licensed. What are we doing to help the young surveyors move into activity? What can we do more? I leave this thought with you that you may be able to implement something into your business model to get your employees active in the profession.

This up and coming year has some challenges that we as an association are facing, but we are trying to be more proactive and less reactive on things that will impact our profession. Over the past two years the Legislative Committee has been working tirelessly to rewrite the "Standards of Practice" document to help our professionals answer questions or give them some direction. We view this document as an opportunity to create a standard that everyone can use and rely upon, and when adopted by the association it can grow some teeth. We also understand that this is a living and breathing document that will constantly need to be amended and updated. This is another opportunity for people to get involved in ISPLS. We would like to see involvement from each Section to keep this document up to date. The board has authorized Brian Allen to travel the State to talk with each Section this year. We would like to be able to vote on this at this year's conference.

Other factors to consider are all the changes that are happening at the State level with the Idaho Board of Professional Engineers and Surveyor. Within this issue on the Gem State Surveyor we have outlined all that has been happening to date. With prosecution lawyers coming from a pool of people that have no experience dealing with surveying related cases and potentially their investigators it becomes more imperative to have a recognized "Standards of Practice" that they can use. This will help our professionals to stay out of their cross hairs.

Because of these issues and the potential of losing our direct link to the Legislature, the board of governors is looking into a lobbyist that can either monitor impactful legislation or be a full time lobbyist for us. I believe that we need to move this direction as we are a small fish in a big ocean and we have to be proactive and less reactive to cut off threats before they happen. We ask you to please speak with your Section Directors on your thoughts and at least find a way to get involved. We are trying to do great things for the association but we need your help.

Respectfully,!

Jeremy Fielding, PLS

President Idaho Society of Professional Land Surveyors

Frontier Precision is committed to ensuring your business has what it needs, whenever and wherever you need it. We keep you working with vital equipment, repairs, rentals, and supplies. We have one of the nation's largest rental fleets of surveying, construction, and mapping products. If you need equipment to keep your crews working, but aren't ready to purchase, contact one of our rental specialists for a competitive quote on long and short term rentals. Frontier Precision - always in your corner.

The elements are not in your corner.
The deadline is not in your corner.
The access to the job site is not in your corner.
We are.

Want more information? Contact:

Mel Philbrook, Geospatial Technical Account Manager
mel@frontierprecision.com

208.955.0049 | 720.273.9182 Direct / Cell

Or

Adam Bridges, Geospatial Sales Representative
adam@frontierprecision.com

208.955.0049 | 208.863.8035 Direct / Cell



Frontier Precision | 5569 West Kendall Street | Boise, ID 83706



2020 DISTINGUISHED SERVICE AND SURVEYOR OF THE YEAR AWARDS ANNOUNCED DURING 2021 ANNUAL CONFERENCE

DISTINGUISHED SERVICE AWARD

Steve Frisbie, PLS received the Distinguished Service Award for 2020. He was nominated by Glenn Bennett who wrote that he had hired Steve as a summer intern position at T-O Engineers. He tried to hire Steve the next year after he graduated but Steve accepted a position back with T-O Engineers, where he remains today.

Steve has grown not only as a professional land surveyor, but in giving back to his profession. He has been a member of ISPLS for many, many years and has held the office of Treasurer for many of these years. He has helped to manage the Society's funds and kept them solvent during many difficult and trying times. He has also been an active participant in the aspects of ISPLS including serving as Treasurer of the Southwest Section, updating the ISPLS Bylaws, Rules and Articles of Incorporation as well as serving on many conference committees.

He regularly attends the American Council of Engineering Companies (ACEC) meeting to give surveyors a much needed voice in the engineering community. He has exhibited an exemplary record of contributions to ISPLS and the surveying profession and is truly deserving of this award.



SURVEYOR OF THE YEAR

Brian Allen, PLS received the Surveyor of the Year Award, nominated by Wade Olorenshaw. Wade stated in his nomination that Brian has served in many capacities including the Eastern Section Chair, serving on the ISPLS Board of Governor's, the ISPLS conference committee, traveling for ISPLS business and Board meetings, working with legislative issues as a member of the External Marketing Committee, and most recently updating the Standards of Practice, outlining minimum standards for surveying in Idaho.

He has helped guide the profession further towards the "art" of surveying (i.e. weighing lines of possession, documenting methods of accepting previous monument) together with the "science" of numbers setting a standard of repeatability in the profession now that was missing in the past. ⊕



DON'T LET THE LEAVES ON THE TREES RUN YOUR RECEIVER OUT OF THE WOODS. GET A BRx7



Magnetic interference-free tilt



Rugged, compact IP67-rated housing



Optimized for SurvCE|PC



Carlson Listen-Listen ready



800+ channels
BEST-IN-CLASS



11+ hours of life with dual, hot-swappable batteries
BEST-IN-CLASS

Fixed+

SureFix® for extreme confidence in your RTK solution
BEST-IN-CLASS



Exceptional performance under canopy
BEST-IN-CLASS



Long-range, spread spectrum dual-band UHF radio
BEST-IN-CLASS



THE HIGHEST PERFORMING, MOST REASONABLY PRICED, BEST-SUPPORTED GNSS SOLUTION AVAILABLE TODAY

Jim Reinbold
Regional Sales Director
303-482-1836
jreinbold@carlsonsw.com
www.carlsonsw.com



FUTURE LEGISLATIVE NEEDS

Over the past many decades, ISPLS has acted as your representative at the federal, state and local levels in many legislative and rule-making efforts. Some of these legislative efforts have been to improve things for the surveying industry but some have threatened our businesses. The years have taught us that we need to be forever vigilant in watching both current and future legislative efforts at all levels.

At the federal level we have been fortunate to have NSPS as our representative. Idaho is represented through an ISPLS Board member (currently Stewart Ward, Dioptra) who regularly attends NSPS Board meetings and conferences and has input into their legislative monitoring process. He also reports back to our board on things happening at the national level and in Congress so we can take positions and let them be known to our own Congressional delegation when needed.

As for representation at the state level, ISPLS has long depended upon our External Marketing Committee (currently chaired by Jerry Hastings, Ada County) to

track and monitor the State Legislature and their actions. We are helped greatly by Tom Judge of the Idaho Board of Professional Engineers and Professional Land Surveyors, who warns us of items coming down the pike. However, due to heavy workloads in all of our companies and a reorganization of the licensing board under a much bigger umbrella of the State Division of Occupational and Professional Licensing, our volunteer committee and Board members are finding it harder and harder to devote the intense amount of time it takes to keep track and stay on top of current, much less future, legislation.

Unfortunately, technology has caused issues to move faster and faster and we find ourselves reacting rather than being proactive on upcoming legislative threats. We discover that sometimes issues are identified, discussed and decisions made even before the Legislative Session begins.

The Board of Governors has discussed this and made the decision to seek out options to help us keep up and to have a recognized presence at the Statehouse. One such option is to explore the use of a government affairs representative (lobbyist) whose job is to be in touch with the pulse of the legislature year-round. We are currently seeking estimates of fees and costs in order to make a decision on the best way to proceed. We have determined that such a cost can fit into the current budget without an immediate membership dues increase but it would result in a small portion of your dues becoming non-deductible because they would be going to government affairs.

We would like to seek out your input as a member. Please contact myself or any board member prior to our August 14 BOG meeting if you have any thoughts on this proposal.

Jeremy Fielding, President ⊕

Bonneville
Blue
Precision Solutions

Chad Powell
chad@bonnevilleblue.com

208.521.5408 • C
208.522.0010 • O
208.522.9960 • F

1802 Curtis Ave.
Idaho Falls, ID 83402

www.bonnevilleblue.com

THE WORLD'S FASTEST GNSS RTK ROVER

Introducing the **Leica GS18 T**, the first true tilt compensation solution that is immune to magnetic disturbances. The bubble no longer has to be centered. As a matter-of-fact, you can forget about the bubble. In addition to that, the system is calibration-free, so no long-winded procedures are required.

Just turn it on and go.



First True
Tilt Compensation



Works Out Of The Box,
Calibration-Free



Immune To Magnetic
Disturbances

www.ForgetTheBubble.com

For more information please contact:



Bonneville
Blue
Precision Solutions

Leica
Geosystems

Boise Location: 208 376 5710 Idaho Falls Location: 208 522 0010

NEW IDAHO ORGANIZATION PROMOTES SURVEYING AS A CAREER

Idaho GeoLeaders is an industry partner network consisting of Idaho employers who are involved in geomatics disciplines, like Land Surveying, GIS, UAV Photogrammetry/LiDAR, and 3D Reality Capture, to connect Idaho 6th-12th graders with local employers to fulfill exploratory experiences. The mission of GeoLeaders is to promote geomatics as an attainable career choice by creating memorable on-the-job programs, generating awareness of an industry that is in high demand, and securing good jobs for our future workforce. We will also recognize the sponsoring organizations via press releases and awards.

Staying relevant to current educational trends, geographical sciences require all four STEM components to land a career as a land surveyor or geospatial professional. As STEM programming evolves, opportunities like job shadowing, apprenticeships, and internships are quite possibly the most impactful methods to promote persistence among young people and the desire to learn more. Middle and high-school students who are drawn to STEM curriculums are considered by many to be the “learn by doing,” and “experience is everything” generation, and on-the-job exploratory experiences are the pathways to their next phase in life.

Geomatics disciplines are unique as they create an incredibly broad range of career opportunities. Hundreds of individual jobs exist as a result of the technological marvels that exist among modern surveying, GIS, and remote sensing. Take, for example,

drones—perhaps the most popular STEM activity—are now a part of the geospatial toolkit.

The Idaho GeoLeaders program is anticipated to launch in September 2021, with a dedicated website that will allow partners to register, create an industry profile, and begin promoting apprenticeship opportunities. Eligible students with strong interest levels will be matched with all levels of exploratory opportunities via a profile matching system. We hope you will join us and help cultivate the next generation of geomatics experts!



Idaho GeoLeaders is a division of Idaho Geographics LLC, an educational consulting business that develops and integrates geographic science curriculums into middle and high-school STEM programming, and Career & Technology Education (CTE) departments at postsecondary institutions. In addition to academic programs, Idaho Geographics is involved in postsecondary placement and workforce feedback analysis.

*For more information, please contact
Christopher Rice
(208) 570-0400*

*chris.rice@idahogeographics.com
idahogeographics.com* ☎

This advertisement features a black and white photograph of a man with glasses looking frustrated, with his hand on his head. Below the photo is the handwritten text "don't let cad drive you mad!". To the right of the photo is the text "That CAD Girl" in a large, stylized font. Below this, contact information for Jennifer Dibona is provided: "jennifer dibona", "www.thatcadgirl.com", "jennifer@thatcadgirl.com", and "(919) 417-8351". The advertisement also includes the Carlson logo and text: "Carlson AUTHORIZED DEALER CERTIFIED TRAINING CENTER" and "Carlson Software Sales, Support & Training". At the bottom, it states "Office and field software for land surveying, civil design and construction professionals".



Surveying posters still available! Just contact the ISPLS office at **(208) 658-9970** or info@ispls.org and we would be happy to get them to you. ☎

**TREASURE VALLEY LAND/
CONSTRUCTION SURVEY
COMPANY FOR SALE**

Established in 1994, this land and construction survey business is one of the most well known and respected surveying companies in the Treasure Valley. Indeed, this opportunity consists of two divisions operating under one entity sharing assets and personnel. Both divisions are strong in the industry separated by job types. One focuses on construction layout and public works projects like highway construction, public schools roads and rights-of-way.

The other division focuses on conventional survey work such as subdivision survey, boundary, record of survey, topography, elevation certifications and ALTA surveys. Over 90% of the company's business comes from repeat customers; its customer list reads like the "Who's Who" of the construction related entities, including the State of Idaho Department of Transportation, Ada County Highway District, some of the largest commercial general contractors and engineering firms in the Treasure Valley. While over the years this client Company has employed more, currently the Company has one employee plus the owner. The ask price is \$105,000 including about \$80,000 in equipment.

Contact: Randy Limani, Arthur Berry & Company
 rlimani@arthurberry.com | (208) 867-6085
 (cell)

Randy Limani
 Principal/Broker

Main office: (208) 336-8000
 Direct line: (208) 639-6172
 Cell: (208) 867-6085
 Fax line: (208) 345-0609

rlimani@arthurberry.com
 www.arthurberry.com

Bonneville
Blue
 Precision Solutions

Josh POWELL
 jpowell@bonnevilleblue.com

208.484.7386 • C
 208.376.5710 • O
 208.376.2951 • F

10933 W. Emerald
 Boise, ID 83713

www.bonnevilleblue.com

ISPLS CALL FOR ARTICLES

And we are in need of surveying related articles for the *Gem State Surveyor!* Please submit any suggestions or articles in electronic form to the ISPLS office at info@idahospls.org or tottens@amsidaho.com.

FRONTIER
 How You Measure Matters
PRECISION

Adam Bridges
 GEOSPATIAL SALES
 REPRESENTATIVE
 An Employee-Owned Company

5569 West Kendall Street | Boise, ID 83706
 208.955.0049 | 800.523.6408
 208.863.8035 / Direct
 adam@frontierprecision.com
 www.frontierprecision.com

ND | SD | MN | CO | AK | MT | ID | HI | WY | UT | OR | WA

LEGISLATIVE PROPOSALS FOR THE 2022 SESSION

On April 2, 2021 staff for The Board of Licensure for Professional Engineers and Professional Land Surveyors (IPELS) provided a letter detailing the legislative proposal for the 2022 legislative session. We have received feedback from numerous licensees and worked through changes with the ISPLS Legislative Committee.

THE SPECIFIC CHANGES UNDER CONSIDERATION ARE AS FOLLOWS:

Corner Record terminology housekeeping:

31-3205. RECORDER'S FEES.

(4) All instruments delivered to the county recorder for record shall be recorded rather than filed with the exception of plats, surveys, ~~cornerstone markers~~ corner records and instruments under the uniform commercial code.

Licensing Law – Definition and Signature updates:

54-1202. DEFINITIONS. As used in this chapter, unless the context or subject matter requires otherwise.

- “Engineer intern” means a person who has ~~qualified for, taken and passed an examination in the fundamentals of engineering subjects~~ been duly certified as an engineer intern by the board as provided in this chapter.
- “Land surveyor intern” means a person who has ~~qualified for, taken and passed an examination in the fundamentals of surveying~~ been duly certified as a land surveyor intern by the board as provided in this chapter.

(18) Signature. The term “Signature” means either shall include the terms “manual signature”, “facsimile signature” and “digital signature” and shall be defined as follows: (a) Manual Signature. A manual signature is an the original handwritten message identification containing the name of the person who applied it to a

document or record that identifies the person, serves as a means of authentication of the contents of the document, provides responsibility for the creation of the document and provides for accountability for the contents of the document; (b) Facsimile Signature. A facsimile signature is a graphic representation of a manual signature attached to or logically associated with a record and executed or adopted by a person with the intent to sign the record; or (b)(c) Digital Signature. A digital signature is a digital signature, which is an electronic document authentication process attached to or logically associated with an electronic document, and executed or adopted by a person with the intent to sign the document or record. The A digital signature must be unique to the person using it; must be capable of verification; must be under the sole control of the person using it; and must be linked to a document in such a manner that the digital signature is invalidated if any data in the document is changed. (Keith’s suggested addition: A facsimile or digital signature carries the same force and effect as a manual signature.)

54-1215 Idaho Code

- Except for engineering faculty holding a restricted license pursuant to section 54-1214(5), Idaho Code, each licensee hereunder shall, upon licensure, obtain a seal, the use and design of which are described below. It shall be unlawful for any person to affix or to permit his seal and signature to be affixed to any documents after the license of the licensee named thereon has expired or has been retired, suspended, or revoked, unless said license shall have been renewed, reinstated, or reissued, or for the purpose of aiding or abetting any other person to evade or attempt to evade any portion of this chapter.
- The seal may be a rubber stamp, crimp or electronically generated image. Whenever the seal is applied, the licensee’s signature and date shall also be included. If the signature is ~~handwritten manual~~ manual or a facsimile, it shall be adjacent to or across the seal. No further words or wording is required. Any hard copy printed from a transmitted digitally signed electronic file shall bear the

image of the digital signature and seal and be a confirmation that the electronic file was not altered after the initial digital signing of the file.

Platting Law – Basis of Bearing and definitions:

50-1301. DEFINITIONS. The following definitions shall apply to terms used in this section and sections 50-1302 through 50-1334, Idaho Code.

(1) Basis of bearing: (a) The bearing in degrees, minutes and seconds, or equivalent, of a line between two (2) monuments or two (2) monumented corners that serves as the reference bearing for all other lines on the survey; or (b) a description of the bearing system used to include a complete citation of the datum, epoch and name of the published projection used must be shown on the survey. If a custom projection is used, the datum, epoch and defining parameters of the projection sufficient to recreate the bearing system must also be shown on the survey. For surveys where the bearing system is shown in accordance with sub-section (b) herein, the convergence angle computed at a minimum of one monument on the survey must be shown.

(6) Monument: A physical structure or object that occupies the position of a corner intended to mark, reference or witness a line, corner or position;

(11) Public land survey corner: Any point actually established and monumented in an original survey or resurvey that determines the boundaries of remaining public lands, or public lands patented, represented on an official plat and in the field notes thereof, accepted and approved under authority delegated by congress to the U.S. general land office and the U.S. department of the interior, bureau of land management, this excludes GLO-surveyed townsite lot corners, except those marking exterior angle points or block corners within the townsite;

(19) GLO. The General Land Office and its' successor agency, the Department of Interior Bureau of Land Management.

Corner Record Law – definitions:

55-1603. DEFINITIONS. Except where the context indicates a different meaning, terms used in this chapter shall be defined as follows:

(7) “Monument” means a physical structure ~~that occupies the exact position of a corner intended to mark, reference or witness a line, corner or position~~

Corner Record Law Basis of Bearing and definitions:

55-1902. DEFINITIONS. As used in this chapter:

(1) “Basis of bearing” means (a) the bearing in degrees, minutes and seconds, or equivalent, of a line between two (2) monuments or two (2) monumented corners that serves as the reference bearing for all other lines on the survey., or (b) a description of the bearing system used to include a complete citation of the datum, epoch and name of the published projection used must be shown on the survey. If a custom projection is used, the datum, epoch and defining parameters of the projection sufficient to recreate the bearing system must also be shown on the survey. For surveys where the bearing system is shown in accordance with sub-section (b) herein, the convergence angle computed at a minimum of one monument on the survey must be shown.

(6) “Monument” is a physical structure or object ~~that occupies the exact position of a corner intended to mark, reference or witness a line, corner or position~~

(12) GLO. The General Land Office and its' successor agency, the Department of Interior Bureau of Land Management.

New corner monument options added to PLSS monuments for ties:

50-1304 (2) The plat shall show: (a) the streets and alleys, with widths and courses clearly shown; (b) each street named; (c) all lots numbered consecutively in each block, and each block lettered or numbered, provided however, in a platted cemetery, that each block, section, district or division and each burial lot shall be designated by number or letter or name; (d) each and all lengths of the boundaries of each lot shall

CONTINUED

be shown, provided however, in a platted cemetery, that lengths of the boundaries of each burial lot may be shown by appropriate legend; (e) the exterior boundaries shown by distance and bearing; (f) descriptions of survey monuments; (g) point of beginning with ties to at least two (2) ~~public land survey corner monuments in one (1) or more of the sections containing the subdivision, or in lieu of public land survey corner monuments, to two (2) monuments recognized by the county surveyor;~~ monuments from the following list:

- public land survey corners.
- center of section, quarter section corners, or sixteenth section corners any of which were not monumented in an original survey of the United States. Such corners must have a corner record meeting the current requirements of Title 55, chapter 16 and related administrative rules,
- monuments recognized by the county surveyor for this purpose.

Plats which are re-subdivisions of subdivisions of record need not meet this requirement.

and also, if required by the city or county governing bodies, give coordinates based on the Idaho coordinate system; (h) the easements; (i) basis of bearings, bearing and length of lines, graphic scale of plat and north arrow; and (j) subdivision name; and (k) narrative as described in section 55-1906, Idaho Code.

55-1906. Records of survey — Contents. The records of survey shall, at a minimum, show: (5) ~~Ties to at least two (2) public land survey corner monuments of record in one (1) or more of the sections containing the record of survey, or in lieu of public land survey corners, to two (2) corners of records recognized by the county surveyor;~~ monuments from the following list:

- public land survey corners.
- center of section, quarter section corners, or sixteenth section corners any of which were not monumented in an original survey of the United States. Such corners must have a corner record meeting the current requirements of Title 55, chapter 16 and related administrative rules,

- monuments recognized by the county surveyor for this purpose.

Records of survey which are within previously platted subdivisions of record need not be tied to public land survey corner monuments. meet this requirement.

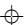
Quarter Corner C, P & F requirement:

55-1604. Filing requirements. A professional land surveyor shall complete, sign, and file with the county clerk and recorder of the county where the corner is situated, a written record of the establishment, reestablishment, or rehabilitation of a corner monument and its accessories. This record shall be known as a "corner record" and such a filing shall be made for every public land survey corner, center one-quarter (1/4) corner, corners used as ties in 50-1304 (g) Idaho Code or 55-1906(5) Idaho Code, and accessory to such corner which is established, reestablished, monumented, remonumented, rehabilitated, perpetuated or used as control in any survey. The survey information shall be filed within ninety (90) days after the survey is completed, unless the corner and its accessories are substantially as described in an existing corner record filed in accordance with the provisions of this chapter.

Please contact me if you have questions or concerns regarding any of these proposals. Your feedback is important. Traveling to present these proposed changes is difficult for the time being. If your local section (or any group of surveyors) would like to discuss these on a zoom conference I will try to accommodate.

Please return any comments to:
Thomas A. Judge, PLS, CFedS
Deputy Director for Surveying
Idaho Board of PE & PLS

1510 E. Watertower St., Ste. 110
Meridian, ID 83642
Phone (208) 373-7210; Fax (208) 373-7213

www.ipels.idaho.gov
facebook.com/IdahoPELS 



Accepting late registrants and/or registrations for the Spring semester now.

Unmanned Aerial Systems

Intermediate Technical Certificate (ITC)

Why UAS?

As the unmanned aircraft systems (UAS) industry continues to grow exponentially, the benefits of gaining an education specific to UAS have become apparent. The College of Western Idaho plans to be a leader in UAS curriculum by launching a program that will provide state-of-the-art courses and practical instruction necessary for graduates to become UAS industry professionals.

Why CWI?

Our curriculum offers hands-on flight experience using industry standard aircraft and photogrammetry software. Students will learn to operate unmanned aircraft, process captured data properly, fly UAS missions as part of a crew, cultivate an appreciation for industry standard safety protocols, as well as develop a strong foundation of aviation fundamentals.

Program Outcomes

Possess an excellent understanding of FAA regulations
Perform flight operations with regards to airspace, weather and safety
Understand, analyze and interpret GIS data as it relates to UAS
Capture and process UAS data
Assess UAS security and privacy issues and implement solutions

Who Utilizes UAS?

- Public service and Safety
- Agriculture and Forestry
- Architecture and Construction
- Civil Engineering and Land Surveyors
- Marketing and Sales
- Natural Sciences

Key Courses

- Flight Theory and Flight Lab I & II
- Mission Planning
- GIS Basics and Remote Sensing
- UAS Privacy and Security
- Digital Imagery

Need More Info?

Contact: Tim Schuh
208.562.2360
timschuh@cw.edu



Achieve More!

<http://cw.edu/program/unmanned-aerial-systems>

CONFERENCE REPORT

For the first time in ISPLS history, the annual conference was a virtual affair. Due to Covid restrictions ISPLS was forced to try putting on the conference solely online, including offering speakers, lunchtime events and our awards ceremony. We are happy to report that despite these restrictions:

- We had over 150 surveyors participate in our sessions
- We had four great sponsors and were even able to have “speed” networking event during lunch on Friday for them to introduce themselves and their products and take questions
- Have our annual membership meeting and present our annual awards ceremony

The profit off the event, which is the primary funding for our Society for the entire year, did not include meal or facility costs.

And we can even report that despite not having our annual scholarship auction we were still able to bring in \$5,300 from voluntary donations from our

members and Sections, representing about half of what we would have normally made off an auction and helping to keep our scholarship fund in a healthy position.

Thanks to everyone who made the conference a huge success in trying times!

**CALL FOR CONFERENCE
COMMITTEE MEMBERS—The 2022 ISPLS
Annual Conference is coming.**

SAVE THE DATE
February 14-18, 2022 | Moscow, ID

The Board of Governors is looking for conference committee planning members from all over the state to work with staff to identify topics and speakers relevant to your surveying needs. Below is a list of duties for committee members—the primary responsibility being to identify topics and potential speakers. If you are interested in finding out more or serving please contact Teri Ottens, Staff at (208) 658-9970 or tottens@amsidaho.com.

Conference committee responsibilities:

- Determine theme of conference
- Determine conference session topics and schedules
- Make speaker recommendations
- Assist in initial contact of speakers
- Working with staff in identifying and contacting potential vendors/sponsors
- Assist Chair in seeking out auction items



START YOUR SURVEYING CAREER

- ABET ACCREDITED
- FULLY ONLINE
- FINANCIAL AID AVAILABLE
- PROFESSIONAL MENTORS

Idaho State University | College of Technology | **LEARN MORE**

The Most Connected GNSS Receiver

The SP80 offers a unique combination of integrated 3.5G cellular, Wi-Fi and UHF communications with SMS, email and anti-theft technology.

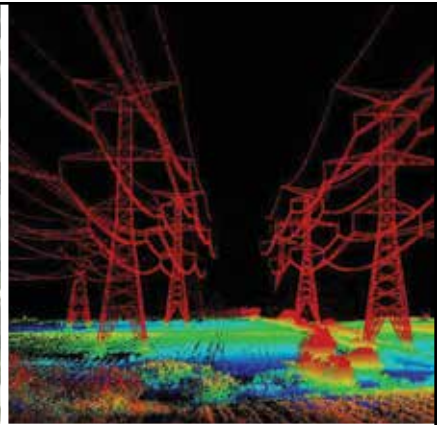
SP80

Features:

- Patented Z-Blade Technology
- 240-channel 6G ASIC
- Hot-swappable batteries
- Internal TRx UHF radio
- 3.5G cellular modem
- Built-in WiFi communication
- SMS and email alerts
- Anti-theft technology
- Backup RTK
- RTK Bridge
- eLevel Technology
- Trimble RTX correct services



Contact Troy Langston
800-821-0672



- Digital Aerial Photography
- LIDAR
- Mobile Mapping
- Topographic Mapping
- Orthorectified Imagery



aero-graphics

GEOSPATIAL SERVICES

40 West Oakland Avenue, Salt Lake City, UT 84115 · PHONE: 801-487-3273 · FAX: 801-487-3313

UPDATE ON REORGANIZATION OF THE STATE LICENSING BOARD

As we reported in the last GSS, there is a reorganization effort that puts the Idaho State Board of Licensure of Professional Engineers and Professional Land Surveyors under a new Division of Occupational and Professional Licensing (DOPL).

Since the bill passed in 2020 mandating this change ISPLS has been in touch with the new Division and had a meeting with them to express our three top concerns under this reorganization. These include:

- Staffing – We have worked hard over the years to get staff in the Director and Deputy Director positions that have backgrounds in the surveying and engineering fields to assist in industry rules, laws and regulations and in disciplinary actions.
- Disciplinary Actions – We want to be sure that disciplinary complaints and actions are investigated by people who have a background

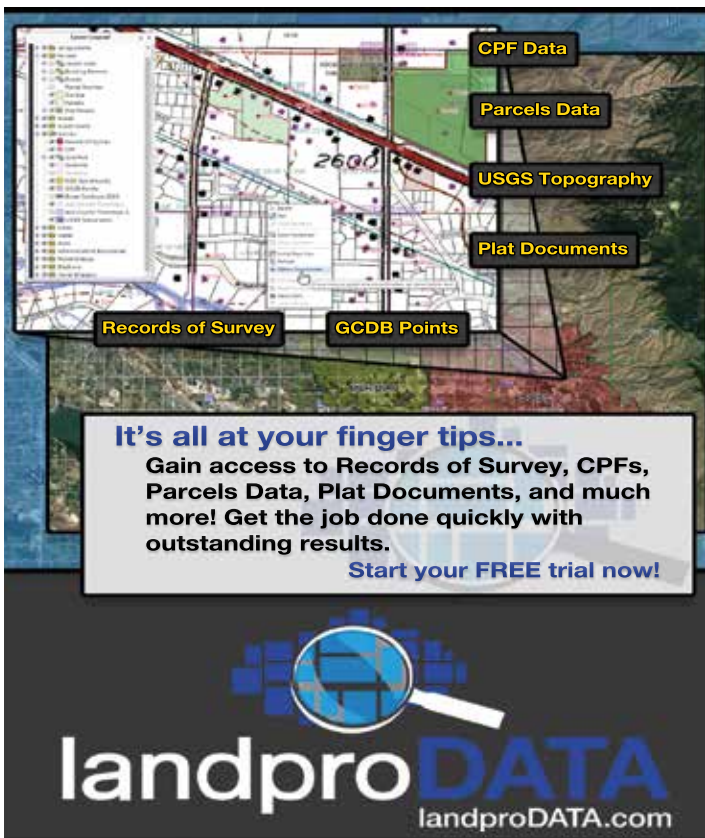
in the industry, and not from a pool of general investigators.

- Board Authority and Responsibilities – We want to protect the ability of our board to best represent our industry needs by retaining their authority in operational, legal and legislative matters.

After our first meeting we felt like our concerns were heard and that any reorganization would address them. Since then, we have heard concerns from members that some of these priorities may not be met. Out of caution that this could be true, ISPLS reached out to DOPL and have been told that a final organizational chart will be available after June 1.

The Board of Governors has requested a meeting between the Division staff and industry representatives from both ISPLS and engineering groups as soon as that chart becomes available to discuss.

We will keep our membership informed as this reorganization proceeds. We want to make sure that any changes to the licensing and rule-making process being made will continue to protect our industry and represent the views of surveyors and engineers out in the field. ⊕



It's all at your finger tips...
Gain access to Records of Survey, CPFs, Parcels Data, Plat Documents, and much more! Get the job done quickly with outstanding results.
Start your FREE trial now!

landproDATA
landproDATA.com

ISPLS CALL FOR PICTURES

We are looking for great pictures depicting surveyors and surveying situations around the state for use on both our website and the *Gem State Surveyor*. The pictures have to be high quality, in a tif or jpeg file, and should not be long shots of anything (close-ups are preferred). We also need permission to use them now or in the future! Please submit to the ISPLS office at info@idahosppls.org or tottens@amsidaho.com. ⊕

STANDARDS OF PRACTICE UPDATE

Members of the ISPLS External Marketing Committee have been constantly working over the past year and half to create the new ISPLS Standards of Practice document. The current draft of the standards is on the ISPLS website for review and it includes all of the additional comments received over the past few months (thank you to those that have taken the time to contribute!). Some of the reasons this document is being created have been covered in a previous GSS article and at the general membership meeting last February. One important reason is that the pending DOPL reorganization may re-emphasize the necessity for ISPLS to step up and be more active in determining what are the acceptable practices within our profession (see related article on page 18).

Currently the committee is working on creating the Standards Committee and determining which changes are necessary to our Policies and By-laws to oversee the maintenance and use of these standards. More information will be passed on to the Section Directors as we get closer to completing this process for membership comment and input. Below are the discussed conditions directing the committee:

ISPLS Standards Sub-Committee, under the Administrative Committee

Duties & Responsibilities

- Maintain, modify, and interpret the ISPLS Standards of Practice for Idaho license holders, interns, and others.
- Be the primary resource for answering questions concerning the practice of Land Surveying in Idaho for Professional Land Surveyors, interns, public agencies, and the public.
- Consult and work in conjunction with the ISPLS legislative committee and the IBPEPLS deputy director.
- Arbitrate or mediate differences or disagreements between Professional Land Surveyors.
- Conduct education and information seminars.

Committee Makeup

- 5-9 Idaho PLS members.
- Chairman & vice-chairman to be selected by the committee
- Secretary, to be elected by the committee members.
- One member elected/appointed by each active geographic section
- If there are not an adequate number OF ACTIVE SECTIONS, THE REMAINDER AT LARGE MEMBERS TO BE APPOINTED BY THE BOARD OF GOVERNORS (NO MORE THAN A TOTAL OF 2 MEMBERS FROM ANY GEOGRAPHIC SECTION).
 - No more than 1 member can be from the same family, company, or employer.
 - The deputy director of surveying IBPEPLS (ex-officio non-voting member).
- Members are not required to be a member of ISPLS

Due to the lack of in-person meetings the past year, the Board of Governors has proposed meetings throughout the state later this summer or early fall to gather comments and suggestions, and allow for more in-depth discussions concerning the contents, purpose, and potential uses of the standards. Please contact your section directors to help schedule these meetings.

If you are interested in finding out more about these efforts, please contact Board member Brian Allen at bwireallen@gmail.com or 208-852-2839. ☎

**FRONTIER
PRECISION**
How You Measure Matters

Mel Philbrook
GEOSPATIAL TECHNICAL
ACCOUNT MANAGER
An Employee-Owned Company

5569 West Kendall Street | Boise, ID 83706
208.955.0049 | 800.523.6408
720.273.9182 / Direct
mel@frontierprecision.com
www.frontierprecision.com

ND | SD | MN | CO | AK | MT | ID | HI | WY | UT | OR | WA

MINUTES | BOARD MEETING | MAY 8, 2021

Present:

Jeremy Fielding, Stewart Ward, Jerry Hastings, Adam Thayer, Brian Allen, Steve Frisbie, Hagen Beckstead, Chris Reynaldo, Teri Ottens - Staff.

Fielding called the meeting to order at 9:05 am.

Proxies:

Chris Reynaldo will be the proxy for Rob Stratton, Northern Section.

Minutes:

There was one correction - under marketing the board should be IBPEPLS not ISPLS.

Motion: Ward moved to approve the 2021 Board meeting minutes as amended. Hastings seconded. Passed unanimously.

The 2021 Membership meeting minutes were reviewed and no changes seen.

Discussion of Meeting Protocols:

Fielding would like more streamlined meetings with the board being more pro-active rather than reactive. He would like to see committee reports submitted one week before the meetings and discussion only when an action is needed. This will avoid continuous rehashing of issues and taking valuable time from items that really need our attention.

Conference Report:

2021 - The final report for the 2021 conference was presented and reviewed. Over \$35,000 was made as the conference was virtual and we had no facility, meal or travel costs.

2022 - Staff asked for confirmation on taking the conference to Moscow. It was agreed to go back there and to try and find a conference chair from the Clearwater or Northern section.

We need a standing conference committee from around the state with the section members the conference will be in taking the leading role.

Committee Updates:

NSPS - Ward presented the final written NSPS report summarizing the winter meeting.

Membership - Reviewed list

GSS - Issue out by the end of May

Website -

- Career Page - The draft career page was reviewed and staff was directed to get the webpage created.
- Jobs - There is an opportunity for members post their own their own job announcement at very little cost. This was received favorably by the board.
- Membership Roster - There is an opportunity to let members changes their own information on the site. Staff is getting some cost estimates on what this might cost.

Legislative Update:

2022 IBPEPLS - A report from Tom Judge was reviewed. Allen said there were changes in the legislative report including in the areas of:

- Basis of Bearing
- Monuments for Record of Survey (including 16th corners on list)

IDOPL - Staff discussed concerns about the reorganization of the licensing board under the new Division of Occupational and Professional Licensing. It appears that it is not taking place as we were previously promised. We will reach out to ACEC and ISPE and attempt to arrange another meeting with the Division to find out what is happening.

Discussion on Lobbyist - It appears that we need to become more pro-active on legislative and state organizational issues. This could be accomplished through the services of a lobbyist, as one option. Staff was directed get quotes from several lobbyists on two levels and report back.

- Monitoring Only
- Lobbying Services

We need to reach out to membership and let them know what we are thinking. Fielding will work on an email to the members with the assistance of Frisbie, Hastings and Beckstead and we will also include in an article in the GSS.

MINUTES | BOARD MEETING | MAY 8, 2021

Education:

Two upcoming training dates were acknowledged:

May 19 - GPS on BM Webinar

Sept 15-17 - Benchmark Training

Scholarships:

Thayer reported that only two application have been received so far, deadline is June 1. He asked everyone to encourage applications.

Financial Report:

Frisbie presented the report and explained we have a good balance because of reduced expenditures this year and a good conference.

Motion: Hastings moved to accept the financial report as presented. Ward seconded. Passed unanimously.

Standards of Practice - Allen discussed the importance of getting this effort and a committee set up by next February. He has received additional comments since the last meeting and enclosed these in the draft currently before the board. If the DOPL reorganization weakens the licensing board and investigations this document could serve an important role in monitoring surveyors. Or profession needs to take back some control over professional and ethical issues in our industry.

There was discussion on creating the sub-committee to keep the standards updated and to provide interpretations. Included:

- Do not have the BOG approve the Section members - let the Sections appoint them
- Chair and Vice-Chair will be selected by the committee
- Could elect a secretary but depend on staff for minutes and administrative duties
- Fund Allen's travel to meet with Sections around the state to explain the Standards and committee responsibilities. The timing on this would be early Fall. A travel budget will be determined.

We will include a progress report in the GSS.

Young Surveyors - Thayer reported on the April 30 presentation from ITD to the young surveyors with about 20-25 people present.

WestFed - Bylaws changes on term length will be continued to the next meeting. We will also address if the position should be voted on or appointed by the board. Ward reminded the board that we should check on what the term should be (perhaps matching the NSPS term).

Staff Report - The staff report was reviewed and acknowledged.

Old Business:

Fielding directed staff to strike the holding item on meeting discussions from the agenda.

The calibration baseline topic is still active and should remain on the agenda. Frisbie gave a brief report that they are working with the City of Boise for an alternate location to the south of the airport.

New Business:

Staff Transition - There was discussion on recruitment of new staff by 2022. It was decided to create and send out an ad to determine interest, with a sub.

Committee will be Frisbie, Hastings, Fielding and Ballard. Ballard will chair.

Bylaws - There was discussion on getting signatures on the bylaws approved at the February meeting.

Next Meeting:

August 14 - McCall. Staff will seek out a location and rooms and this will be a hybrid meeting.

December 4 - Boise

Adjournment: The meeting was adjourned at 11:36 a.m.

Respectfully Submitted: Teri Ottens ✦

ISPLS BOARD



EASTERN SECTION DIRECTOR

Brian Allen

Allen Land Survey
bwireallen@gmail.com
208-852-2839

GSS EDITOR

Hagen Beckstead

Foresight Surveying
hagen@foresightsurvey.com
208-339-4246

IEPLS LIASON

Glenn Bennett

Civil Survey Consultants, Inc.
elkwatcher@outlook.com
208-375-5389

PAST PRESIDENT

Coy Chapman

Sawtooth Land Surveying
coy@sawtoothls.com
208-329-5303

PRESIDENT

Jeremy Fielding

Eagle Land Surveying
pls12220@yahoo.com
208-861-7513

VICE PRESIDENT

Aaron Ballard

KM Engineering
aballard@kmengllp.com
208-559-8060

TREASURER

Steve Frisbie

T-O Engineers
sfrisbie@to-engineers.com
208-323-2288

DAVID THOMPSON DIRECTOR

Tyson Glahe

Glahe & Associates, Inc.
tglahe@glaheinc.com
208-265-4474

MAGIC VALLEY SECTION DIRECTOR

Chris Harmison

EHM Engineers, Inc.
charmison@ehminc.com
208-734-4888

SW SECTION DIRECTOR

Jerry Hastings

Ada County Development Services
jhastings@adaweb.net
208-287-7912

QBS REPRESENTATIVE

Joseph Jones

Sawtooth Land Surveying
joe@sawtoothls.com
208-398-8104

STATE CST COORDINATOR

Robert Liimakka

Idaho State University
liimrobe@isu.edu
208-373-1807

EXECUTIVE DIRECTOR/ SECRETARY

Teri Ottens

ISPLS
tottens@amsidaho.com;
trowley@amsidaho.com
208-658-9970

HIGH COUNTRY DIRECTOR

Vacant

BIGWOOD DIRECTOR

Bruce Smith

Alpine Enterprises Inc.
bsmith@alpineenterprisesinc.com
208-727-1988

CLEARWATER DIRECTOR

Vacant

NORTHERN SECTION DIRECTOR

Robert Stratton

Stratton Land Surveying
rob@strattonls.com
208-687-2854

YOUNG SURVEYOR REP

Adam Thayer

Dioptra
adam@dioptrageomatics.com
208-757-1435

NSPS REPRESENTATIVE

Stewart Ward

DIOPTRA LLC
stewart@dioptrageomatics.com
208-251-3962