

⊕ GEM STATE SURVEYOR ⊕

FALL | 2020



TABLE OF CONTENTS

Calendar of Events	2
Editor's Message	3
President's Message	4
Conference Announcement	6
Legislative Update	7
Idaho QBS Law Update	11
ISPLS Call for Articles	11
America Has Two Feet	12
Board Call for Nominations	14
Association Membership	16
ISPLS Call for Nominations	18
Scholarship Announcement	19
ISPLS Call for Pictures	19
Board Meeting Minutes	21
Board Members	23



Visit our webpage for the latest news

www.idahospls.org

FOLLOW US :

[www.facebook.com/](http://www.facebook.com/idahosocietyofprofessionallandsurveyors/)

idahosocietyofprofessionallandsurveyors/

CALENDAR OF EVENTS

October	Call for Nominations for ISPLS Awards
December 5	ISPLS Board of Governors Meeting via Zoom
February 16-19, 2021	ISPLS 2021 Conference, Moscow

EDITOR: Hagen Beckstead

PUBLISHER: AMS

The *Gem State Surveyor* is a quarterly publication of the Idaho Society of Professional Land Surveyors. It is not copyrighted and articles may be reprinted with due credit. Any article, letters, or other contributions will be accepted and considered for publication regardless of the author's affiliation. Statements of opinion which may be expressed may not necessarily represent the official views of ISPLS unless specifically noted. Article submission must be in digital form. Photographs must be high resolution jpeg files.

ADVERTISING POLICY

Advertisements should be submitted in digital form to fit an 8 ½ x 11 page. Rates for color are as follows:

Advertisements should be submitted in digital form, JPG file (minimum 300 dpi), to fit an 8 ½ x 11 page. Rates are as follows (updated 2013):

Size	Dimensions	B&W Full Year	B&W Single Issue	COLOR Full Year	COLOR Single Issue
Full Page	7.25" w x 9.75" h	\$720.00	\$180.00	\$800.00	\$200.00
1/2 Page	7.25" w x 4.7" h	\$360.00	\$90.00	\$400.00	\$100.00
1/4 Page	3.46" w x 4.7" h	\$180.00	\$45.00	\$200.00	\$ 50.00
Business Card	3.46" w x 2.25" h	\$90.00	\$22.50	\$100.00	\$ 25.00

Sustaining members 10% off above prices.

Publishing an advertisement does not imply endorsement of the advertiser by ISPLS and the editor reserves the right to reject advertising which may be in poor taste or in opposition to the policies of ISPLS.

The *Gem State Surveyor* will advertise equipment stolen from any of our members free of charge. ISPLS will pay \$50.00 for information leading to the arrest and conviction of the perpetrator.

Idaho Society of Professional Land Surveyors

P.O. Box 7886
Boise, Idaho 83707
(208) 658-9970

Friends in the field.



EDITOR'S MESSAGE

I want to lead off this quarter's installment of the Gem State Surveyor by thanking the people who have taken time from their busy schedules to contribute. This has been a difficult year for most of us and putting this quarter's publication together was no easy task. The content that has been provided, however, is important for anyone practicing surveying in the Gem State. We also owe a debt of gratitude to the advertisers who make this publication possible. Please show your support by submitting content and suggestions for future publications.

In our President's Message you will find important information concerning changes in rule enforcement and investigative procedures that will directly affect surveyors in our state. Please take some time to read this important piece. A related article by Tom Judge, the Legislative Update, covers many significant legislative matters which have passed into law as well as others which are currently under consideration. You will want to review this piece to see what has changed, and, as importantly, what may be changing. If you want to know how to get involved, review the Idaho QBS Law Update, which provides useful information about potential legislative changes and various ways to get involved and stay informed. These complementary pieces deserve special attention.

This quarter's publication also provides a useful article on a problem we have all encountered: the fact that surveying involves two feet, one of which is larger than the other. Dad Jokes aside, we are taking a break from the question of whether the United States should move to the metric system to call your attention to a new standardization of the foot as a unit of measurement.

And finally, we ask you to respond to the call to be active in the ISPLS. Alongside recognition awards for surveyors in our society, we are looking for nominations for a new Vice-President for the ISPLS Board of Directors. Our society depends on the valuable input of its members. Please be active in your local chapter, be willing to offer content to this publication that will be useful for our members, and help us recognize surveyors who have a special place in our society.

Hagen Beckstead, *Editor GSS*



PRESIDENT'S MESSAGE – FALL 2020

In the 2020 Legislative Session, a bill was passed that created a new State of Idaho division of government, named the Idaho Division of Occupational and Professional Licensing (IDOPL). While it was on our radar, we were assured by the Governor's office and the staff at the Idaho Board of Licensure of Professional Engineers and Professional Land Surveyors (IBLPEPLS), that this legislation would not effect our own licensing board.

The stated purpose of the legislation was to update the law that created and provided legal direction to the Idaho Bureau of Occupational Licensing (IBOL). But there was a clause added to the language which gave the Governor ability to move any licensing agency under this newly named division. And indeed, we learned over the summer, that the Governor directed our own licensing agency to move under the purview of this Division. Currently there has been no official notice on what this will mean for our licensing board but your ISPLS Board of Governors has some concerns:

- What role will our board have? Will they retain their powers to review disciplinary actions, as well as their legislative and rule-making authority? Or, as has been heard lately, will they be turned into an advisory board with no authority?
- What about disciplinary issues? Who will investigate? Currently, on the IDOPL website, an organizational chart shows generalist investigators assigned to regions in the state, not to professions. Will these investigators (many of whom currently are former law enforcement) be trying to investigate engineering or surveying matters?
- This move has added two layers of bureaucracy on top of the Executive Director of IBLPEPLS. What will be their role? Can they overrule decisions of our own board's staff? Will these division leaders be making the final decisions on the legislative and disciplinary actions of our licensing board? What roles will our board's current staff play?

Rest assured that the ISPLS Board of Governors is following this issue closely and building coalitions with other professional groups, that have similar concerns, to monitor the situation. And we will keep you informed and possibly be asking for your involvement as this issue progresses.

Sincerely,

Coy Chapman, PLS

President Idaho Society of Professional Land Surveyors

Frontier Precision is committed to ensuring your business has what it needs, whenever and wherever you need it. We keep you working with vital equipment, repairs, rentals, and supplies. We have one of the nation's largest rental fleets of surveying, construction, and mapping products. If you need equipment to keep your crews working, but aren't ready to purchase, contact one of our rental specialists for a competitive quote on long and short term rentals. Frontier Precision - always in your corner.

The elements are not in your corner.
The deadline is not in your corner.
The access to the job site is not in your corner.
We are.

Want more information? Contact:

Mel Philbrook, Geospatial Technical Account Manager
mel@frontierprecision.com

208.955.0049 | 720.273.9182 Direct / Cell

Or

Adam Bridges, Geospatial Sales Representative
adam@frontierprecision.com

208.955.0049 | 208.863.8035 Direct / Cell



Frontier Precision | 5569 West Kendall Street | Boise, ID 83706





Save the Date

ISPLS 2021 Conference

February 16-19, 2021

Moscow, Idaho

* Note: Due to Covid-19 restrictions this conference will be offered both live and virtually.

Some Featured Speakers (invited)

JEFFERY LUCAS
BOUNDARY RETRACEMENT CASES
PINCUSHION EFFECT
EXPERT WITNESS TESTIMONY FOR SURVEYORS

DAN DETERMAN, NOAA
NEW HORIZONTAL DATUM UPDATE

JULIE MOORE ASSIST. PROF. LCSC
LCSC SURVEYING PROGRAM UPDATE

ROBERT LIIMAKKA ASSIST. PROF. ISU
ISU SURVEYING PROGRAM UPDATE

DAN YOUNG CADASTRAL SURVEYOR BLM BOISE
WHAT'S NEW WITH BLM
TRICKS TO RESEARCHING ON GLO RECORDS.BLM.GOV
NEW HORIZONTAL DATUM UPDATE

And Roundtables on local issues!

THOMAS JUDGE IPELS
LEGISLATIVE ISSUES & NEW LAWS



Look for registration materials in October

LEGISLATIVE UPDATE - BY TOM JUDGE

The Board has submitted one agency bill for the 2020 session. The bulk of the bill is a rewrite of Title 55, Chapter 17; Coordinate System of Land Description. A rationale letter was published in the Spring GSS and stakeholder negotiations have been ongoing since. The ISPLS Legislative Committee, the Geodetic Control Technical Working Group (GC-TWG) at ISU and the Board have produced an excellent bill to modernize the use and treatment of spatial data. As of this writing the legislative idea has been 'recommended for approval' by our analyst. The text of the bill is included at the end of this article. Note the text includes a housekeeping repeal of the requirement for an annual report.

During the 2020 session a bill was passed granting the Governor authority to move self-governing licensing agencies under the Idaho Division of Occupational and Professional Licenses. Governor Little elected to move the Board under IDOPL. One result of this move is our rules were renumbered. The current laws and rules pertaining to land surveying can be viewed and downloaded from the Board website here:

https://ipels.idaho.gov/docs/forms_pubs/20200701Lawbook.pdf

Legislation was recently transmitted to the professional societies, including ISPLS. The proposal includes numerous definition changes, most of which are to reconcile variations across chapters. The Board hopes to pursue a new option for the "basis of bearing" on plats and surveys. The idea is to allow the surveyor to provide enough information to recreate the bearing system used as opposed to selecting a particular line and monuments.

While the focus of this article is legislation, there is another source of governing information important to licensees; the Agency Guidance Documents. The Board and staff have updated all available Board opinions and letters and compiled them into the Professional Land Surveying Agency Guidance Handbook. The handbook gives licensees direction on the standard of care expectations of the Board. The document can be found here:

<https://ipels.idaho.gov/docs/AGC/ProfessionalLandSurveyingManual.pdf>

Following is a summary of the agency proposal for the 2021 Legislative proposal. The majority of 55-17 is being changed by "repeal and replace" and some of the changes are housekeeping. Some changes of note are:

55-1701. DEFINITIONS AND ACRONYMS. -

This section will add definitions for the NATIONAL SPATIAL REFERENCE SYSTEM (NSRS); the NATIONAL GEODETIC SURVEY (NGS); the STATE PLANE COORDINATE SYSTEM (SPCS); the IDAHO PLANE COORDINATE SYSTEM (IPCS); the IDAHO TRANSVERSE MERCATOR (IDTM)

55-1702. THE IDAHO PLANE COORDINATE SYSTEM (IPCS). -

This section speaks to providing and prescribing the information that defines the currently accepted system of plane coordinates of the IPCS and how the system will be used.

55-1703. PLANE COORDINATES. -

This section defines use of coordinates.

55-1704. zone naming and documents reporting coordinates within multiple zones. -

This section speaks to what is included in coordinates.

55-1705. STATED OR IMPLIED ACCURACY. -

This section speaks to the accuracy of coordinates.

CONTINUED

FRONTIER PRECISION
How You Measure Matters

Adam Bridges
GEOSPATIAL SALES REPRESENTATIVE
An Employee-Owned Company

5569 West Kendall Street | Boise, ID 83706
208.955.0049 | 800.523.6408
208.863.8035 / Direct
adam@frontierprecision.com
www.frontierprecision.com

ND | SD | MN | CO | AK | MT | ID | HI | WY | UT | OR | WA

NEW SECTION:

55-1706 GEODETIC COORDINATES. -

This section states that official geodetic datums State of Idaho shall be those defined by the NGS.

NEW SECTION:

55-1707 NON-AUTHORITATIVE PLANE OR GEOGRAPHIC COORDINATES -

This section speaks to the appropriate use of coordinates from non-authoritative sources or coordinates based on alternative datums and geodetic reference networks.

55-1708. Coordinate descriptions supplemental.

55-1709. Description by coordinate not mandatory. Nothing contained in this chapter shall require any lessee, purchaser or mortgagee of real property or right in real property to rely wholly on a land description, any part of which depends exclusively upon coordinates of the IPCS.

NEW SECTION:

55-1710. MODIFIED COORDINATES OF THE IPCS. -

This section speaks to how modified coordinates will be labeled.

If you want a copy of the full text please email the ISPLS office at tottens@amsidaho.com or call us at (208) 658-9970 (office), (208) 869-6832 (cell)

Ahh, winter...



Bonneville
Blue
Precision Solutions

Chad Powell
chad@bonnevilleblue.com

208.521.5408 • C
208.522.0010 • O
208.522.9960 • F

1802 Curtis Ave.
Idaho Falls, ID 83402

www.bonnevilleblue.com

THE WORLD'S FASTEST GNSS RTK ROVER

Introducing the **Leica GS18 T**, the first true tilt compensation solution that is immune to magnetic disturbances. The bubble no longer has to be centered. As a matter-of-fact, you can forget about the bubble. In addition to that, the system is calibration-free, so no long-winded procedures are required.

Just turn it on and go.



First True
Tilt Compensation



Works Out Of The Box,
Calibration-Free



Immune To Magnetic
Disturbances

www.ForgetTheBubble.com

For more information please contact:



Bonneville
Blue
Precision Solutions

Leica
Geosystems

Boise Location: 208 376 5710 Idaho Falls Location: 208 522 0010



Surveying posters are Available! Just contact the ISPLS office at **(208) 658-9970** or info@ispls.org and we would be happy to get them to you. ☺

SURV-KAP®

No Boundaries On Customer Service

We manufacture a full line of brass survey markers for all of your surveying needs.

MONUMENTS, MARKERS, CAPS & ACCESSORIES

ORDER NOW: 800-445-5320 • SURV-KAP.COM

IDAHO QBS Law Update



The Idaho QBS Council is working with our member partners (listed below) in following up on the 2020 legislative challenge to qualifications-based procurement of professional services in the state. There was a series of bills proposed in the recent legislative session that would have required cost to be at least 50% of the selection criteria to award a professional services contract with design professionals (under Idaho law surveyors are considered design professionals). This bill died last year in the legislature but will be coming back again this year.

The Council is working with the lobbyists of our several member organizations to communicate with Rep. Young, out of Eastern Idaho, to propose changes to the current wording of the state QBS law to address the concerns with the process but that will also protect QBS. Those negotiations are ongoing but if we are unable to reach agreement, we will be asking for ISPLS members to contact their legislators to explain why QBS is so important to the industry. So watch for our Legislative Alerts near and during the 2021 Session and be ready to assist!

MEMBERS OF THE IDAHO QBS COUNCIL ARE:

- American Council of Engineering Companies of Idaho (ACEC)**
- American Institute of Architect, Idaho (AIA)**
- Idaho Society of Professional Land Surveyors**
- Idaho Society of Professional Engineers (ISPE)**
- Structural Engineers Association of Idaho (SEAI)**
- American Public Works Association/Association of Idaho Cities Public Works Association**
- Idaho Montana Chapter of American Society of Landscape Architects (ASLA)**
- Local Highway Technical Assistance Council (LHTAC)**
- Construction Managers**

For more information on the QBS Council please call (208) 321-1736. ☎

Bonneville Blue
Precision Solutions

Josh POWELL
jpowell@bonnevilleblue.com

208.484.7386 • C
208.376.5710 • O
208.376.2951 • F

10933 W. Emerald
Boise, ID 83713

www.bonnevilleblue.com

ISPLS CALL FOR ARTICLES

And we are in need of surveying related articles for the *Gem State Surveyor*! Please submit any suggestions or articles in electronic form to the ISPLS office at info@idahospls.org or tottens@amsidaho.com. ☎

FRONTIER PRECISION
How You Measure Matters

Mel Philbrook
GEOSPATIAL TECHNICAL
ACCOUNT MANAGER
An Employee-Owned Company

5569 West Kendall Street | Boise, ID 83706
208.955.0049 | 800.523.6408
720.273.9182 / Direct
mel@frontierprecision.com
www.frontierprecision.com

ND | SD | MN | CO | AK | MT | ID | HI | WY | UT | OR | WA

AMERICA HAS TWO FEET. IT'S ABOUT TO LOSE ONE OF THEM.

By Alanna Mitchell

New York Times | Aug. 18, 2020

For decades, U.S. metrologists have juggled two conflicting measurements for the foot. Henceforth, only one shall rule.

How big is a foot? In the United States, that depends on which of the two official foot measurements you are talking about. If it comes as a surprise that there are two feet, how about this: One of those feet is about to go away.

The first foot is the old U.S. survey foot from 1893. The second is the newer, shorter and slightly more exact international foot from 1959, used by nearly everybody except surveyors in some states. The two feet differ by about one hundredth of a foot (0.12672 inches) per mile—that's two feet for every million feet—an amount so small that it only adds up for people who measure over long distances.

Surveyors are such people. For more than six decades, they have been toggling between the two units, depending on what they are measuring and where.

The toggling does not always work. Michael L. Dennis, an Arizona-based surveyor and geodesist with the National Geodetic Survey, has been cataloging mix-ups with the two feet for years and repairing errors. Last year, he had enough.

"I kept running into these problems with different versions of the foot, and I thought it was ridiculous that this thing had gone on this long," he said. "So I had this secret desire to kill off the U.S. survey foot, and I'd been harboring that for years."

Most states mandate the use of the old U.S. survey foot for their state coordinate systems, which allow surveyors to take into account Earth's curvature in their measurements. A few states mandate the use

of the new, international foot. A handful do not specify which of the two feet should be used. Arizona, for example, is an international-foot state, but when employees with the Federal Aviation Administration or the U.S. Army Corps of Engineers or the Park Service measure there, they use the U.S. survey foot.

"There's a recipe for disaster right there, and I'm getting this all the time," Dr. Dennis said.

While such differences might seem merely philosophical, they can have vital and costly consequences in the real world. In one case, in a certain city that Dr. Dennis declined to name, the construction of a downtown high-rise that sat in the approach path to an international airport was delayed while the building was redesigned to be one floor shorter.

Other problems crop up when surveyors measure from one state to the next, unaware that the two states use different feet. In some cases, large projects employ international surveying firms whose employees are unaware that America has two feet. Some surveying computer software will not recognize the existence of two feet and even hand calculators usually default to the international foot.

Occasionally, surveyors must use one foot for horizontal measurements and the other for elevations. That happened to Dr. Dennis on an engineering project in Arizona. But while the geospatial software was capable of acknowledging both feet, it would not allow for different feet in different directions. He resolved the problem by converting everything to international feet and massaging the vertical measurements, which ought to have been in U.S. survey feet.

"It's bad enough that people are worried about getting sued over it or losing clients," Dr. Dennis said.



U.S. Geological Surveyors measuring a baseline near Fort Wingate, N.M., in 1883.

Photo: Library of Congress

And then there's the problem of knowing which foot is which. Even the National Geodetic Survey gets muddled. In a video about how not to mix up the two feet, it mixed them up. It wrongly said that 2,000 meters was 6,561.67 international feet and 6,561.68 U.S. survey feet, reversing the correct conversions. The error went unnoticed for years until Dr. Dennis watched the video recently as he plotted to kill the old foot. He was mortified.

"This provides yet more evidence of the folly of maintaining two nearly identical versions of the same foot," he wrote in an email.

Fed up, Dr. Dennis broached the subject of retiring, or deprecating, the old U.S. survey foot with his boss, Juliana P. Blackwell, the director of the National Geodetic Survey. The nation's geodesists are already in the throes of recalibrating the coordinates of the National Spatial Reference System, which is needed to measure where the U.S. exists geographically. It seemed like a golden opportunity to ask those who measure the nation to shift to one foot instead of two, Ms. Blackwell said.

"It's one of those things that's been with you for so long you forget that there's an opportunity here to make things more accurate," she said.

So, last April, Dr. Dennis braced for the worst, traveled to Arlington, Va., and told a meeting of the nation's surveyors that the old foot was on its way out, a casualty of modernity.

"The joke was, the people who knew I was doing this said I need to wear a bulletproof vest," he said.

To his surprise, the directors of the National Society of Professional Surveyors were in favor of the shift to a single foot. Although the directors don't have a role in the decision, they wanted to know how their members would react. A poll told them that most support the move. But others consider it akin to blasphemy.

"One thing is, let's be honest, the actual name, the U.S. survey foot," said Timothy W. Burch, the society's president-elect, who is in favor of retiring the old foot. "For unfortunately a lot of Americans, especially in this day and age, anything that has to do with the U.S. and that naming quality being taken away, it's like we're under attack. So there is a portion of the country that's like, No, this is ours, this is what we're going to keep."

It's no surprise that some Americans are reluctant to do away with the old foot, said Robert P. Crease, a philosopher and historian of science at the State University of New York at Stony Brook and the author of "World in the Balance: The Historic Quest for an Absolute System of Measurement."

"The way we measure shapes our imagination," he said. "Changing the way that you measure requires

CONTINUED

changing the imagination, and that's really difficult. It sounds like a neutral activity but it's anything but."

One foot forward

Whether they embrace the new one or not, the old foot will be obsolete as of Jan. 1, 2023, according to the National Institute of Standards and Technology, the agency within the Department of Commerce with the authority to fix weights and measures for the U.S.

"At that point, we will discourage everyone from using the U.S. survey foot," said Elizabeth Benham, the institute's metric program coordinator.

The switch to a single foot, which will be known as either the international foot or simply the foot, is too subtle to require surveyors to purchase new yardsticks or measuring tapes, but it is part of an intellectual retooling among those who, as Mr. Linklater wrote, practice the "masochistic science" of land measurement.

Once, surveyors depended on handwritten deeds or plaques with century-old notes to describe plots of land, said Mr. Burch of the National Society of Professional Surveyors. Later, when Mr. Burch

learned the profession from his father in the 1980s, each job felt like its own world, he said.

Today, thanks to global navigational satellite systems such as GPS, every measurement is part of a master global coordinate system. The way Mr. Burch sees it, moving to a single American foot is a small step in the long march toward standardization and precision.

"It's funny how protective people have gotten over this change," Mr. Burch said. "It's just not taking into account that science and technology has allowed us to get that much smarter about this big blue marble we live on."

As for Dr. Dennis, his successful campaign to get rid of the old foot leaves him feeling that he has made an important contribution to America's future.

"It's a victory for, dare I say it, common sense to have uniform standards. Even our founding fathers of the nation knew that it was important," he said, "and it's kind of weird that people would argue otherwise today."

Watch the next GSS issue for a follow-up article on the History of the American Survey Foot! 


CALL FOR NOMINATIONS

Board of Governors for 2021

Nominations for the ISPLS Board of Governors position of Vice-President are being accepted. The deadline for nominations is **November 20, 2020**. Nominations may be faxed to the ISPLS office at (208) 321-4819, scanned and emailed to tottens@amsidaho.com or mailed to P.O. Box 7886, Boise, ID 83707.

IN ACCORDANCE WITH THE ISPLS BYLAWS:

The Vice President must be an ISPLS voting member and shall be elected by the membership-at-large for a term of two (2) years whose term shall commence at the annual meeting, and without further election, shall, upon completion of their term, become President.

To receive a nomination form please email the ISPLS office at tottens@amsidaho.com or call us at (208) 658-9970 to get a form. 



Accepting late registrants and/or registrations for the Spring semester now.

Unmanned Aerial Systems

Intermediate Technical Certificate (ITC)

Why UAS?

As the unmanned aircraft systems (UAS) industry continues to grow exponentially, the benefits of gaining an education specific to UAS have become apparent. The College of Western Idaho plans to be a leader in UAS curriculum by launching a program that will provide state-of-the-art courses and practical instruction necessary for graduates to become UAS industry professionals.

Why CWI?

Our curriculum offers hands-on flight experience using industry standard aircraft and photogrammetry software. Students will learn to operate unmanned aircraft, process captured data properly, fly UAS missions as part of a crew, cultivate an appreciation for industry standard safety protocols, as well as develop a strong foundation of aviation fundamentals.

Program Outcomes

Possess an excellent understanding of FAA regulations
Perform flight operations with regards to airspace, weather and safety
Understand, analyze and interpret GIS data as it relates to UAS
Capture and process UAS data
Assess UAS security and privacy issues and implement solutions

Who Utilizes UAS?

- Public service and Safety
- Agriculture and Forestry
- Architecture and Construction
- Civil Engineering and Land Surveyors
- Marketing and Sales
- Natural Sciences

Key Courses

- Flight Theory and Flight Lab I & II
- Mission Planning
- GIS Basics and Remote Sensing
- UAS Privacy and Security
- Digital Imagery

Need More Info?

Contact: Tim Schuh
208.562.2360
timschuh@cw.edu



Achieve More!

<http://cw.edu/program/unmanned-aerial-systems>

ASSOCIATION MEMBERSHIP AND THE SURVEYOR— WHY ISPLS SHOULD MATTER TO YOU

The Merriam-Webster dictionary defines membership as follows:

membership noun
 mem·ber·ship | \ˈmem-bər-ship\
plural memberships

Definition of *membership*

- 1 : the state or status of being a member
- 2 : the body of members
 // an organization with a large *membership*

Membership is implied to be individuals who have something in common and therefore wish to belong to a group or organization that promotes that commonality. This is not a new concept, as various memberships have existed for centuries. The groups can be formal or informal, business or social, public or private, but the common interest is key to them all. Membership organizations all serve a good and dedicated purpose; however, the most important one that will most likely provide the most benefit is the professional membership.

MEMBERSHIP IN PROFESSIONAL ASSOCIATIONS

Membership in a professional society, especially in times like these, is also important on many levels. For the surveying profession, it provides advocacy and representation for not just the licensed practitioner, but anyone who works in surveying. Some of the benefits of being a member of state and national surveying associations include:

REGULATION & ADVOCACY

Part of the association's role for professional oversight is regulatory advocacy. Professional licensing

has come under fire in recent years as deregulation groups seek to eliminate licensing they see as a barrier to entry rather than to protect the integrity of the interests. State and national associations are working together to defend our profession against these efforts and maintain the regulatory requirements of the surveyor.

Another area of advocacy is political representation at both the federal and state levels. From UAV uses to fighting back against infringing uses of radio signals used by GNSS satellites, the associations work together to represent the surveying profession's best interest in potentially damaging policies and lack of funding for essential surveying and mapping activities.

PROFESSIONAL STANDARDS

Besides advocating for licensing, the associations provide input and guidance for professional standards for technical documents and services. From working with the title examiners group to establish a national land title survey standard to specific guidelines for deliverables, our association groups work together to raise the standard of the profession. They also advocate for a higher ethical standard for all practitioners in surveying so to be seen in a respectable light.

Various certification programs are available through the national and state associations, including:

- Certified Survey Technician
- Certified Hydrographic Surveyor
- Certified Floodplain Surveyor

These certifications allow Surveyors to promote their skill set further as one who is specifically trained for a particular task.

EDUCATION

The surveying associations provide continuing education (whether statutorily required or not) for all levels and tasks of surveyors, from introductory field and office to advanced technology and legal curriculum. Many also provide material refreshers for those preparing for their licensing exams. Many of these educational opportunities are held during annual conferences and seminars specifically targeted for surveyors, whether members or not.

Labor shortages are happening in most professions and surveying is no different. Our organizations provide educational outreach for future surveyors through various conduits, including elementary and high school programs and college career days through engineering and mapping-related curriculums. We also promote scholarship opportunities for two- and four-year degree college programs through a variety of channels.

TECHNOLOGY

Along with formal surveying education topics and discussions, another substantial portion of an association's conference or seminar is an exhibitor's hall showcasing the latest and greatest in surveying technology. It is also a place for vendors to present new data services to augment existing surveying tasks.

Technology providers often utilize these associations for advertising and marketing so members are exposed to new equipment, software, and processes more directly than simply advertising in trade magazines.

THE INTANGIBLES

While the aforementioned are the main examples of the benefits of membership in your state and national surveying association, for many it is simply

the opportunity to connect with fellow professionals and technicians. Whether it be for job openings, questions regarding a specific survey or simply engaging another professional in peer review, your membership in these groups helps to pave the way to completing these tasks and more.

TAKING CARE OF TODAY AND PLANNING FOR TOMORROW

Although we are living in unprecedented times, maintaining your memberships, both state and national, may become a question of necessity. For most, prioritizing expenses has become more scrutinized and membership is easily seen as non-essential cost. These memberships are an investment in your profession and career, so consider that return when your next renewal form comes in the mail. The money spent now on professional memberships can go a long way in keeping your profession and career acknowledged as an essential service for years to come. ⊕

START YOUR SURVEYING CAREER

- ABET ACCREDITED
- FULLY ONLINE
- FINANCIAL AID AVAILABLE
- PROFESSIONAL MENTORS

Idaho State University | College of Technology | **LEARN MORE**

CALL FOR IDAHO SOCIETY OF PROFESSIONAL LAND SURVEYORS AWARD NOMINATIONS

The ISPLS Board of Governors is accepting nominations for three recognition awards as listed below. Nomination forms are attached or can be found at www.idahospls.org/members/#resources.

Awards nominations are due no later than 5:00 p.m. on November 20, 2020.

CRITERIA FOR NOMINATION AND SELECTION OF HONOREES

AWARD FOR DISTINGUISHED SERVICE TO THE LAND SURVEYING PROFESSION

- (a) A nomination for the Distinguished Service to the Land Surveying Profession Award shall be presented to the Board prior to the December meeting of the Board.
- (b) A record and biographical sketch in writing shall accompany the nomination.
- (c) The Board shall not take action on such nominations prior to the December meeting.
- (d) The Distinguished Service Award shall be awarded only when the Board feels that such award is justified.
- (e) The following minimum requirements must be met to qualify for the Distinguished Service Award:
 - Be a Registered Land Surveyor.
 - Be a member of the Idaho Society of Land Surveyors.
 - Have been in practice as a PLS for at least ten (10) years.
 - Have a history for maintaining a high degree of competence.
 - Have a history and reputation for maintaining a high degree of integrity.
 - Have made substantial contributions to the advancement of the profession.
 - Have shared knowledge and information with fellow professionals.
 - Have assisted qualified and interested people in advancement within the profession.

- Have performed a survey or a series of surveys which are challenging in one of the following ways:
 - In difficult topography.
 - Of unusual difficulty.
 - In the face of public or private opposition.
- Various requirements may be waived for one of the following reasons:
 - Lifelong service to the profession.
 - Eminence of a regional or national level.
 - Performance of an act or service bringing widespread public acclaim to the profession

SURVEYOR OF THE YEAR AWARD

- (a) Nomination for the Surveyor of the Year Award shall be presented to the Board prior to the November meeting of the Board.
- (b) A record and biographical sketch in writing shall accompany the nomination. Said record shall include, but not be limited to, the following information:
 - Membership in professional and technical Societys or societies.
 - Awards or Honors.
 - Membership, participation and service in the Idaho Society of Land Surveyors.
 - Public Service.
- (c) The recipient of the Surveyor of the Year Award shall be selected from the nominees by the Board prior to the annual meeting.

FRIEND OF THE SOCIETY

- The Idaho Society of Professional Land Surveyors seeks to honor individuals whose works has consistently and significantly contributed to the profession of land surveying and/or the benefit of the society.
- Nominations shall be submitted to the Board prior to the fall Board meeting.
 - The ISPLS Board of Directors will select the recipient prior to the annual meeting. ☼

SCHOLARSHIP ANNOUNCEMENT

Awards available for the 2021 Spring Semester ranging in amounts from:

\$500.00 TO \$2,350.00

Deadline: November 20, 2020

ELIGIBILITY

Applicants must be second, third, or fourth year students majoring in Civil Engineering Technology or Surveying and Geomatics Engineering Technology at an Idaho College or University, enrolled as a full-time student (defined as 12 credit hours), and have a minimum of 3.0 GPA.

APPLICATION REQUIREMENTS

1. Completed application form

2. Written statement: Attach a written statement (500 words) addressing your educational and career goals, your plans to finance your education, and why you are deserving of this scholarship.

3. Written essay: Attach a written essay (500 words) answering the following questions: What three things interest you the most about surveying? What does ethics have to do with the surveying? What do you think the surveying industry will look like in 10 years?

4. Transcripts: Include with this application a copy of your most recent transcripts and a copy of your current class schedule (unofficial is acceptable).

Applications available at:

<https://www.idahospls.org/education/>

Return applications to: Idaho Society of Professional Land Surveyors, PO box 7886, Boise, ID 83707 or scan and email to tottens@amsidaho.com no later than the 5:00 pm on the day of the deadline. ☎

The advertisement features a screenshot of a GIS software interface. On the right side, there are several data layers listed in a legend: CPF Data, Parcels Data, USGS Topography, Plat Documents, Records of Survey, and GCDB Points. A magnifying glass icon is positioned over the text 'landproDATA' at the bottom. Below the magnifying glass, the website 'landproDATA.com' is displayed.

It's all at your finger tips...
 Gain access to Records of Survey, CPFs, Parcels Data, Plat Documents, and much more! Get the job done quickly with outstanding results.
 Start your FREE trial now!

landproDATA
 landproDATA.com

ISPLS CALL FOR PICTURES

We are looking for great pictures depicting surveyors and surveying situations around the state for use on both our website and the *Gem State Surveyor*. The pictures have to be high quality, in a tif or jpeg file, and should not be long shots of anything (close-ups are preferred). We also need permission to use them now or in the future! Please submit to the ISPLS office at info@idahospls.org or tottens@amsidaho.com. ☎

The Most Connected GNSS Receiver

The SP80 offers a unique combination of integrated 3.5G cellular, Wi-Fi and UHF communications with SMS, email and anti-theft technology.

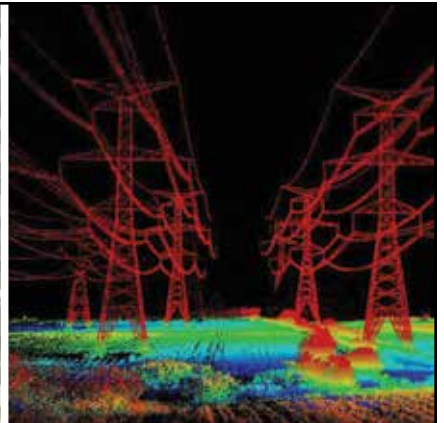
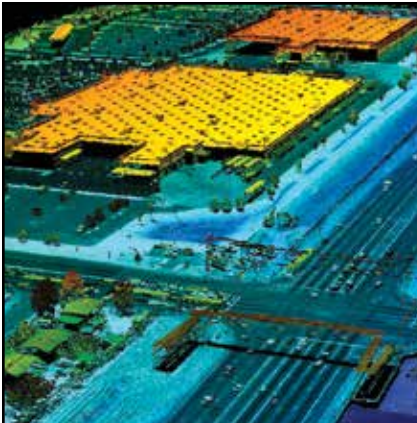
SP80

Features:

- Patented Z-Blade Technology
- 240-channel 6G ASIC
- Hot-swappable batteries
- Internal TRx UHF radio
- 3.5G cellular modem
- Built-in WiFi communication
- SMS and email alerts
- Anti-theft technology
- Backup RTK
- RTK Bridge
- eLevel Technology
- Trimble RTX correct services



Contact Troy Langston
800-821-0672



- Digital Aerial Photography
- LIDAR
- Mobile Mapping
- Topographic Mapping
- Orthorectified Imagery



aero-graphics

GEOSPATIAL SERVICES

40 West Oakland Avenue, Salt Lake City, UT 84115 · PHONE: 801-487-3273 · FAX: 801-487-3313

MINUTES | BOARD MEETING | MAY 2, 2020**Present:**

Jeremy Fielding, Adam Thayer, Glenn Bennet, Tom Judge, Hagen Beckstead, Steve Frisbie, Steve Staab, Coy Chapman, Steward Ward, Jerry Hastings, Brian Allen, Teri Ottens – Staff

Chapman opened the meeting at 9:05 a.m. and called for introductions.

Addition and Changes:

No addition or changes were introduced.

Proxy Votes:

No proxy votes were declared

Minutes:

Motion: Ward moved to approve the February minutes as presented. Hastings seconded. Passed unanimously.

Conference Report:

2020 – Staff reported on the 2020 Conference:

CONFERENCE -
Revenues - \$71,897
Expenditures - \$40,790
Total Profit - \$30,927

AUCTION/BANQUET -
Revenues - \$45,865
Expenditures - \$3,700
Total Profit - \$42,165

Fielding reported that one of the speakers, Victor Villegas, would like to come back to Moscow and Bennett said the conference was great with the exception of the hotel issues.

2021 – Staff reported that the conference was scheduled for Moscow, February 16-19, 2021. It was unclear if Dick Staples was the chair as he has not responded to Chapman's attempts to contact him. Steve Staab will check with those in north Idaho and form a committee. Rob Stratton had shown interest for being on the committee as well. We will also work with other sections for their input on speakers.

Internal Marketing:

Membership – An updated membership report showing non-renewed members to date was distributed. Chapman asked the Section Directors to update information as needed and to contact members who have not renewed. He asked them to report back by May 31.

GSS – Hagen Beckstead was introduced as the new editor of the GSS. There was discussion on the content of the May edition including:

- Editor and Presidents Messages
- Recognition of surveyors who have died (5 in the last 6 months!)
- Conference Report/Pictures
- Award Winners
- Two submitted articles
- Ads
- Notice on Geodetic Class rescheduling
- Legislative Update

- ISU Grant Update
- Brian Allen will do an article on standards of practice, including rationale on why we are trying to do it (not just as another layer of bureaucracy). There was discussion on posting the latest version on the website.
- Encourage members to look at our new website

Website – Staff encouraged the board to review the new changes to the site and let us know any issues. Some that came up:

- Find a Surveyor – Make sure there are only surveyors and not students or associate members on this list.
- Change “Pay my Invoice” button to “Pay my ISPLS Invoice”
- Address issues – What address do we use, work or personal. How do we list these in our database to insure we are using the preferred one?

External Marketing Committee:

Hasting reported on the following:

- Regular meetings were an issue in March due to a change in video conferencing system
- Stayed on top of the legislative issues this year.

Judge reported on the following:

2020

- To meet with Section Directors/Section he will set up Zoom meetings this year
- HB 318 – This bill created a Division of Professional Occupational Licensing (formerly IBOL) with a portion of self-governing agencies that could, at the Governor's decision, could be removed from that status and placed under the new POL Division.
- HB 446 – This bill did not pass, and it would have gutted the QBS process. Chapman discussed how we have to stress that QBS is in the best interest of the public, not just businesses.

2021

- State Plane Coordinates will be only bill we will be carrying – We have to be very careful we do not overwhelm the legislature with complex details on these laws.
- New Datums – These are going to happen, and they are figuring out how to get these adopted. The Governor has issued a moratorium on any new rules so we need to find a way. He discussed the issues with the House and Senate on the rules and how the House is pushing back by not adopting the rules at the end of the session. The Governor has been preparing for that by issuing temporary rules.
- Basis of Bearing - This will allow for use of alternate (GPS friendly) reporting while still allowing the old-fashioned way.
- Definition of Monument – This will update the definition.

Motion: Allen moved to support the proposed Title 55 Chapter 17 proposed language and direct the Legislative Committee to work with the Board and report back. Hastings seconded. Passed unanimously.

MINUTES | BOARD MEETING | MAY 2, 2020

Allen indicated that we would have the final language at the Fall meeting and then can move forward.

Standards of Practice – Allen discussed the draft and the comments received. The intent was discussed – this is not to add bureaucracy but to clarify the practice standards. We are adding an addendum for subdivision plats, corner records and in the future for condominiums. This will assist with changing the way we do things as it is a private document created by professionals and does not need state approval on agreed upon changes. He reported he has gotten some good feedback.

There was a discussion on the rite these standards would play, should versus shall (standard versus recommendations), and language on contracts. The definitions section is vague for a reason as terms can be used differently depending upon the situation. Users should reference state, local and federal law and rules for the definition that best matches the situation.

MOU Recommendations –

Engineers – with ISPE and ACEC recommending:

Ray Watkins
Scott Ellsworth
Dr. Sondra Miller

Surveyors – with ISPLS recommending:

Dusty Obermayer
Jeannie Liimakka

Statute of Limitations – Chapman reported that ACEC, ISPE and ISPLS met and agreed to hold off this year on this legislation due to the QBS fight.

Education Committee:

Benchmark – Staff reported that the training was cancelled and moved to November. There was discussion on possible attendance.

Scholarship – Thayer talked about the scholarship process and changes he would like to make:

- Put notice out in the fall
- March – Due
- May – decisions made
- Summer – money disbursed to the Universities

He is working on making these changes by the August meeting. The only downfall is that we do not get to announce scholarships at the conference. Also, in the transition year we can do a spring and a fall round for 2021. It will put all the scholarships on the same schedule.

Thayer will prepare a proposal for the August.

Staff talked about marketing through social media and a recent campaign she was involved in promoting career choices. She will work with ISU to see if we can work with them to promote our scholarships.

Trig Star – Staab reported that this will not be happening for this spring semester due to Covid-19, but he will get started again in the fall for next year.

Administrative Committee:

Financial Report – Frisbie reported on the following:

Operating - \$79,722
Savings - \$80,467
Scholarship Fund - \$71,052

He proposes to move auction profit of \$45,165 into a new scholarship account. He is also working on identifying a higher yield investment for the savings and scholarship funds.

Policies – These were delayed until the next meeting.

NSPS:

Ward reported that the annual NSPS meeting was cancelled and so the committee and board meetings were done via video. Some issues:

- Legato (formerly Lightsquare) proposal was approved by the FCC and there are concerns that it will disrupt GPS signals
- National Flood Insurance Program was reauthorized
- FIG Working Work – Cancelled this year and scheduled again for May, 2023 in Orlando.
- Covid-19 effects to the budget through a possible decrease in dues, but they are saving funds by not traveling which right now is balancing out. Impact could be out a few years until the world is stable again.
- License Renewal – NSPS s looking at a way to provide uniformity in accepting NCEES's packet by states for license renewal.
- Swearing in of officers with a new president, Mark Phillips.

Young Surveyors:

Thayer went over the conference attendance to his meetings with a great variety of attendees. They had a good discussion with the speakers and the attendees indicated that they learned a lot.

The NSPS Young Surveyors meeting was cancelled and not rescheduled so far.

WestFed:

Fielding reported that their last meeting was the same time as our conference and the minutes have not been released. Once he receives those he will do a summary for the board.

Next meeting is June 27 in Salt Lake City and it will be dependent upon the Covid-19 issues.

Bennett suggested checking with the WestFed speakers bureau for our conference.

Staff Report:

Reviewed and acknowledged.

Next Meeting:

Lewiston, August 22

Adjournment:

The meeting adjourned at 11:58 a.m.

Respectfully Submitted: Teri Ottens ☯

ISPLS BOARD



EASTERN SECTION DIRECTOR

Brian Allen

Allen Land Survey
bwireallen@gmail.com
208-852-2839

GSS EDITOR

Hagen Beckstead

Foresight Surveying
hagen@foresightsurvey.com
208-339-4246

IEPLS LIASON

Glenn Bennett

Civil Survey Consultants, Inc.
elkwatcher@outlook.com
208-375-5389

PRESIDENT

Coy Chapman

Sawtooth Land Surveying
coy@sawtoothls.com
208-329-5303

VICE PRESIDENT

Jeremy Fielding

Eagle Land Surveying
pls12220@yahoo.com
208-861-7513

TREASURER

Steve Frisbie

T-O Engineers
sfrisbie@to-engineers.com
208-323-2288

DAVID THOMPSON DIRECTOR

Tyson Glahe

Glahe & Associates, Inc.
tglahe@glaheinc.com
208-265-4474

MAGIC VALLEY SECTION DIRECTOR

Chris Harmison

EHM Engineers, Inc.
charmison@ehminc.com
208-734-4888

PAST PRESIDENT/ SW SECTION DIRECTOR

Jerry Hastings

Ada County Development Services
jhastings@adaweb.net
208-287-7912

QBS REPRESENTATIVE

Joseph Jones

Idaho Transportation Department
joe.jones@itd.idaho.gov
208-334-8949

STATE CST COORDINATOR

Robert Liimakka

Idaho State University
liimrobe@isu.edu
208-373-1807

EXECUTIVE DIRECTOR/ SECRETARY

Teri Ottens

ISPLS
tottens@amsidaho.com;
trowley@amsidaho.com
208-658-9970

HIGH COUNTRY DIRECTOR

John Russell

Russell Surveying, Inc.
jr_rsi@frontiernet.net
208-630-4737

BIGWOOD DIRECTOR

Bruce Smith

Alpine Enterprises Inc.
bsmith@alpineenterprisesinc.com
208-727-1988

CLEARWATER DIRECTOR

Stephen Staab

Lewis-Clark State College
sstaab@usamedia.tv
208-816-0095

NORTHERN SECTION DIRECTOR

Robert Stratton

Stratton Land Surveying
rob@strattonls.com
208-687-2854

YOUNG SURVEYOR REP

Adam Thayer

Dioptra
adam@dioptrageomatics.com
208-757-1435

NSPS REPRESENTATIVE

Stewart Ward

DIOPTRA LLC
stewart@dioptrageomatics.com
208-251-3962



GEM STATE SURVEYOR

Idaho Society of Professional Land Surveyors
5460 W. Franklin, #A
Boise, ID 83705
