

⊕ GEM STATE SURVEYOR ⊕

MAY | 2020



*Keith Brooks
Distinguished Service
Award, 2019*

TABLE OF CONTENTS

Calendar of Events	2
Editor's Message	3
President's Message	4
ISU Grant Update	6
Legislative Update	7
Awards	8
Surveyor Won	11
"What am I doing here?"	12
ISPLS Call for Articles	13
2020 Conference	14
Standards of Practice	16
Geodetic Leveling Class Cancelled	17
ISPLS Call for Pictures	17
Legislative Reception Invite	9
Conference Schedule	10
Scholarship Announcement	11
ISPLS Call for Nominations	11
Board Meeting Minutes	19
Board Members	21

Visit our webpage for the latest news

www.idahospls.org

FOLLOW US :

[www.facebook.com/](http://www.facebook.com/idahosocietyofprofessionallandsurveyors/)

idahosocietyofprofessionallandsurveyors/

CALENDAR OF EVENTS

August 22	ISPLS Board of Governors Meeting, Lewiston
October	Call for Nominations for ISPLS Awards
December 5	ISPLS Board of Governors Meeting, Boise
February 16-19, 2021	ISPLS Annual Conference, Moscow

See the 2020 Conference Report on page 14



EDITOR: Hagen Beckstead

PUBLISHER: AMS

The *Gem State Surveyor* is a quarterly publication of the Idaho Society of Professional Land Surveyors. It is not copyrighted and articles may be reprinted with due credit. Any article, letters, or other contributions will be accepted and considered for publication regardless of the author's affiliation. Statements of opinion which may be expressed may not necessarily represent the official views of ISPLS unless specifically noted. Article submission must be in digital form. Photographs must be high resolution jpeg files.

ADVERTISING POLICY

Advertisements should be submitted in digital form to fit an 8 ½ x 11 page. Rates for color are as follows:

Advertisements should be submitted in digital form, JPG file (minimum 300 dpi), to fit an 8 ½ x 11 page. Rates are as follows (updated 2013):

Size	Dimensions	B&W Full Year	B&W Single Issue	COLOR Full Year	COLOR Single Issue
Full Page	7.25" w x 9.75" h	\$720.00	\$180.00	\$800.00	\$200.00
1/2 Page	7.25" w x 4.7" h	\$360.00	\$90.00	\$400.00	\$100.00
1/4 Page	3.46" w x 4.7" h	\$180.00	\$45.00	\$200.00	\$ 50.00
Business Card	3.46" w x 2.25" h	\$90.00	\$22.50	\$100.00	\$ 25.00

Sustaining members 10% off above prices.

Publishing an advertisement does not imply endorsement of the advertiser by ISPLS and the editor reserves the right to reject advertising which may be in poor taste or in opposition to the policies of ISPLS.

The *Gem State Surveyor* will advertise equipment stolen from any of our members free of charge. ISPLS will pay \$50.00 for information leading to the arrest and conviction of the perpetrator.

Idaho Society of Professional Land Surveyors

P.O. Box 7886
Boise, Idaho 83707
(208) 658-9970

FELLOW SURVEYORS,

2020 is shaping up to be a year of change.

The first five months of the year have upset our schedules, upset our personal routines, and made us reevaluate everything from our personal interactions to our business practices. As tumultuous as the year has been, many of us are just beginning to enter the busiest time of the year and we know there is plenty in store for 2020. At this year's ISPLS conference I volunteered (after it was suggested by a friend and my former professor Rajandre Bajracharya) to be the new editor of the Gem State Surveyor. I am looking forward to this change in my routine, and to working with some of you as we find content for future publications. Allow me to introduce myself, and then let's have a look at this quarter's publication.

My surveying career began late in the summer of 2010, approximately three weeks before Idaho State University's Fall Semester began. 2010 was also a year of change. After two years of college education, I had taken a short break from my schooling to work and save money. The economic downturn which resulted from the mortgage crisis of that time had bankrupted my employer, and I found myself without work, as many no doubt find themselves today. Having no better ideas, I followed the suggestion of a family friend and enrolled in the Geomatics Technology program at Idaho State University. It was a "fly by the seat of your pants" decision that has changed my life over the last ten years, and has given me opportunity as well as stable employment. I graduated from Idaho State University in 2014, received my license in Idaho in early 2019, and have never quite been able to do anything else!

In this edition of the Gem State Surveyor we will have a message from our president, we will be remembering several surveyors the community has lost, we will be reading stories about how surveyors are made, and we will be looking at upcoming legislative changes.

My goals for this publication are to provide valuable and useful content to our professional society. I look forward to working with all of you, hearing your ideas and suggestions, and contributing my part to this community. Please, feel free to contact me at any time with your ideas. I will be reaching out to many of you, including past contributors, as we put together future publications. Thank you in advance for your contributions.

Hagen Beckstead, *Editor GSS*



PRESIDENT'S MESSAGE MAY 2020

It was nice seeing most of you at our annual conference before all of this COVID-19 upheaval occurred. I hope you all enjoyed the conference. Get any feedback to your section director if you see room for improvement. I'd like to give a shot out to our new Gem State Surveyor Editor Hagen Beckstead. Hagen stepped up at our conference to take on the job. I look forward to getting to know him as a new upcoming board member representing and serving our society. Your board of governors recently had a spring meeting via zoom due to COVID-19 during which we discussed main topics. To highlight a few and to ask for your input on them:

- A list of members and past members was sent out to all of the section directors to get you all on the books and to get any updated information, so get ahold of your section director to make sure your dues and information are current.
- We have a new and improved website, so please look it over and get with your section director if you see something which can be even better. www.idahospls.org
- We are working on getting next year's conference setup in Moscow and as of now plan on holding it as normal. However, we cannot say if it will be a go or not with the COVID-19 recommendations and orders trickling down into our daily lives. We did have to postpone our Geodetic leveling Class, but hope to get it up and running this fall, so keep your ears to the ground on such an announcement.
- We have a few hard-working members regularly meeting on Wednesday's to stay on top of current/upcoming legislation and our forthcoming Standards of Practice. Plus, we did get a few responses from members at large. A huge thank you to all of these individuals and if you're not one of them it's not too late to step-up and guide your profession into the future the way you see fit. If you are unaware of what these diligent individuals are working on reach out to your section directors to get up to speed on the issues facing our profession.
- To better support our upcoming professionals, we are revamping our scholarships. Adam Thayer our Young Surveyor's Representative has taken on this task. I'm really glad to have Adam on our board. He has brought valuable input and has been working hard to better the profession he will inherit. I encourage all of your young surveyors to get involved now! It will give you a chance to get to know other professionals and mold the profession you plan on working in. I would love to see a Young Surveyor on each one of our committees, but only know of two young surveyors serving, one on our Education Committee and one on our External Marketing Committee. Anyone willing to join a committee reach out to me directly and I will help you find a fit to your interest within our society.

I hope you are all doing well and have found a safe, effective way to keep your businesses running during these trying times.

Sincerely,

Coy Chapman, PLS

President Idaho Society of Professional Land Surveyors

Frontier Precision is committed to ensuring your business has what it needs, whenever and wherever you need it. We keep you working with vital equipment, repairs, rentals, and supplies. We have one of the nation's largest rental fleets of surveying, construction, and mapping products. If you need equipment to keep your crews working, but aren't ready to purchase, contact one of our rental specialists for a competitive quote on long and short term rentals. Frontier Precision - always in your corner.

The elements are not in your corner.
The deadline is not in your corner.
The access to the job site is not in your corner.
We are.

Want more information? Contact:

Mel Philbrook, Geospatial Technical Account Manager
mel@frontierprecision.com

208.955.0049 | 720.273.9182 Direct / Cell

Or

Adam Bridges, Geospatial Sales Representative
adam@frontierprecision.com

208.955.0049 | 208.863.8035 Direct / Cell



Frontier Precision | 5569 West Kendall Street | Boise, ID 83706



ISU UPDATE ON DEPARTMENT OF LABOR GRANT

TRIPOD is the name of the Idaho Department of Labor - Workforce Training Industry Sector Grant awarded to the Idaho State surveying program. The purpose of this program is to offer core surveying courses to incumbent workers (surveying technicians in particular.)

Participants will be earning college credits the same as any other college student. Grant funding will pay for any of the NSPS Certified Survey Technician exams - Level I, II or III. In addition, completers will be awarded a Basic Technical Certificate in Surveying by Idaho State University. For those who wish to further their education, TRIPOD opens a pathway to additional degrees in Civil Engineering Technology (Associate of Applied Science) and Surveying and Geomatics Engineering Technology (Bachelor of Science.)

Enrollment into TRIPOD can be either Fall or Spring semester. Participants are enrolled along with other students pursuing degrees in Surveying and Geomatics Engineering Technology and Civil Engineering Technology. The course sequence is set up for participants to take two classes each semester over four semesters, totaling eight courses worth 24 credits. Participants may enroll for just one course to adjust for their job workload.

All though DOL policy does not allow grant funds to be allocated to participants for tuition, it does allow for stipends to be given to PLS mentors. Mentors play an integral roll in this program; supervision of proper techniques and procedures for labs, and providing access to equipment and technology.

Consortium partners in this grant, including ISPLS have supported this cause with generous financial contributions. These funds are being used in advertising campaigns (radio, billboards, state and national newsletters) throughout the state of Idaho. ISPLS funds are primarily being used for advertising.

At a recent meeting with the DOL Workforce Training representative, we requested and were granted an 18-month extension to continue offering TRIPOD courses. This means there is additional time to enroll survey technicians for online training and education up through June 2022.

As of this writing, we are still accepting survey technicians into TRIPOD to join the over one dozen others that are already enrolled. We ask that you encourage surveying technicians who do not already have formal training to participate in this program to increase their knowledge and skills. By doing so, they will be better prepared, more knowledgeable and more valuable to employers and the surveying professional as a whole.

For More Information Contact:

Robert Liimakka, PLS, MS, Coordinator
Surveying and Geomatics Engineering
Technology Program
liimakka@isu.edu ☎

START YOUR SURVEYING CAREER

- ABET ACCREDITED
- FULLY ONLINE
- FINANCIAL AID AVAILABLE
- PROFESSIONAL MENTORS

Idaho State University | College of Technology | **LEARN MORE**

LEGISLATIVE UPDATE - BY TOM JUDGE

The Board ran one agency bill during the last legislative session; Senate Bill 1261. This bill combined several housekeeping measures as well as substantive changes related to monuments. A guidance letter (like the one provided in 2019) will be sent out soon. The guidance letter (and renewal forms) will be sent to the e-mail address on file where possible. Be sure to use the “on-line renewal” tool on the Board website to maintain your contact information.

I had every intention of traveling to meet with the sections and discuss the new laws and rule structure. It is apparent that cannot happen prior to the effective date of new laws on July 1, 2020. Section Directors interested in having an on-line meeting should contact me at tom.judge@ipels.idaho.gov.

Prior to last session, Governor Little required all agencies to reduce our administrative rules. The language of the Board rules was simplified, though most rules were retained in some form. Licensees should be aware that rule numbering has changed. The current laws and rules pertaining to land surveying can be viewed and downloaded from the Board website here: https://ipels.idaho.gov/ic_ar.php

The Board has transmitted all proposed legislation to the society. We will limit our agency bills in the 2021 session to an update of Title 55, Chapter 17 with some minor housekeeping possible.

Idaho Code 55-1701 through 55-1709 Deal with State Plane Coordinates and related issues. The National Geodetic Survey (NGS) will adopt a new reference frame and projections in 2022. This change will require modernization of the laws related to state plane coordinates. We intend to advance our legislation a year in advance of the NGS efforts to streamline adoption of the changes.

The rationale for each subsection is as follows:

- 55-1701 establishes the name of our current coordinate system and defines the zones. This approach requires us to amend our statutes every time the NGS modernizes any element of the national spatial reference system. We will amend the statute to adopt the NGS changes by reference or rule. This approach will eliminate the need for 55-1702 where the zone names are established and 55-1705 where they are defined.
- 55-1702 will be repealed and replaced. We will use this section to address legacy systems such as NAD 27 and NAD 83.
- 55-1703 currently establishes the meter and US Survey foot as the official units of measure for the northing and easting ordinates of our State Plane Coordinate systems. The NGS and National Institute for Standards and Testing (NIST) to adopt the international foot. Our statute will adopt the units in use by the NGS.
- 55-1704 deals with coordinates involving two zones. Idaho will likely change from three zones to nine. The language will change from “two zones” to “multiple zones.”
- 55-1705 currently contains the SPC zone definitions. This will be repealed and replaced with a section on stated or implied accuracy.
- 55-1706 and 55-1707 are not currently used. These will be used to adopt the NGS datums and address non-authoritative and alternative coordinates.
- 55-1708 makes it clear that coordinates in land descriptions are supplemental. This provision will be retained.

CONTINUED

FRONTIER PRECISION
How You Measure Matters

Adam Bridges
GEOSPATIAL SALES REPRESENTATIVE
An Employee-Owned Company

5569 West Kendall Street | Boise, ID 83706
208.955.0049 | 800.523.6408
208.863.8035 / Direct
adam@frontierprecision.com
www.frontierprecision.com

ND | SD | MN | CO | AK | MT | ID | HI | WY | UT | OR | WA

- 55-1709 prevents purchasers or mortgagees from being forced to rely on coordinates as the only control on any boundary or part thereof. This section will be retained.
- 55-1710 is a new section dealing with modified state plane coordinates. The surveyor will have the choice of providing all modification parameters or labeling the coordinates as not being SPC to avoid confusion.
- The sections of platting and record of survey law dealing with coordinates will be amended to reference title 55, chapter 17 to avoid repetition and prevent potential language conflicts.

The outyear proposals being considered are amendments to the definition of “monument” and adding another option for the basis of bearings on survey documents. The language for all proposals can be accessed on the Board website at <https://ipels.idaho.gov/2020rulemaking.php>. ☼

DISTINGUISHED SERVICE AWARD

Keith Brooks, PLS PE

Nomination Submitted by member Tom Ruby:

Keith is one of the finest surveyors you could ever retrace. He is also one of the kindest men you could ever meet. When you request records from Keith you are instantly flooded with more information that you thought you need, but soon realize he know what you needed more than you did. And Keith is so organized he provides you with the information in record speed. Keith has also introduced countless young surveyors to the profession, training a new crop every summer for over 30 years. He has been an active member of



the Magic Valley Section since the day it started holding meetings and has served as President and Vice President. To my knowledge Keith has never missed an ISPLS Conference.

SURVEYOR OF THE YEAR

Shane Remer

Nomination Submitted by member Thomas Taylor:

Shane has always shown a high degree of integrity in all his work. He has always gone out of his way to help fellow surveyors. Shane was instrumental in setting up the “Surveyors Page” on the web for Bonneville County, ID. With this website it is now possible to do research on CP&F’s online for Bonneville County. He is trying to keep up to date on this. This is a great asset to us all. He is always helpful, concerning Bonneville County business. ☼



THE WORLD'S FASTEST GNSS RTK ROVER

Introducing the **Leica GS18 T**, the first true tilt compensation solution that is immune to magnetic disturbances. The bubble no longer has to be centered. As a matter-of-fact, you can forget about the bubble. In addition to that, the system is calibration-free, so no long-winded procedures are required.

Just turn it on and go.



First True
Tilt Compensation



Works Out Of The Box,
Calibration-Free



Immune To Magnetic
Disturbances

www.ForgetTheBubble.com

For more information please contact:

Bonneville
Blue
Precision Solutions

Leica
Geosystems

 PART OF
HEXAGON

Boise Location: 208 376 5710 Idaho Falls Location: 208 522 0010



Surveying posters are Available! Just contact the ISPLS office at (208) 658-9970 or info@ispls.org and we would be happy to get them to you. ☺

SURV-KAP®

No Boundaries On Customer Service

MONUMENTS, MARKERS, CAPS & ACCESSORIES

ORDER NOW: 800-445-5320 • SURV-KAP.COM

SURVEYOR WON

GUEST COLUMN

Once upon a time in 1959, it was Spring Semester at Ferris State College, Big Rapids, Michigan. I was a freshman sitting in class looking out the window. I saw surveying students doing a level loop around the campus. After class, I asked my professor “when are we going to do that?” He replied, “since you are going to be a civil engineer” my job would be sitting at a desk, while the surveyor’s job would be in the field gathering data to bring to me so I could do the calculations. I looked at my professor and asked “how do I get into the surveying program?”

Getting into the Surveying Program was the BEST decision I ever made! The bulk of my career was living in Salmon, Idaho, as the owner of Wade Surveying. I worked 56 years in the surveying profession when I retired from Wade Surveying in 2017, and recently retired my PLS in February 2020. My wife, Karen, never thought I would retire. She would tell me one of these days they will find your body up in the mountains with my arms securely wrapped around a stone corner, and written in the dirt, “I finally found it!”

During my years as owner of Wade Surveying, I had the pleasure of mentoring two young men who became Professional Land Surveyors, Rolland Miller and Mitch Barreras.

I can sum up my career as a Professional Land Surveyor in the words of Confucius: “Choose a job you love, and you will never have to work a day in your life.”

Thank you and keep up the good work!

Laurence J. Wade (Larry) PLS 5080 Retired
Salmon, Idaho ☎



Bonneville

Blue

Precision Solutions

Josh POWELL
jpowell@bonnevilleblue.com

208.484.7386 • C
208.376.5710 • O
208.376.2951 • F

10933 W. Emerald
Boise, ID 83713

www.bonnevilleblue.com

LAND SURVEYING BUSINESS FOR SALE

**The files, records and equipment of
Empire Surveying & Consulting, Inc.,
Empire Surveying & Engineering, Inc. and
Empire Surveying & Forestry, Inc.,
in business for 39 years in Kootenai
County, Idaho is being offered for sale.**

Inquiries can be made to
eseinc@frontier.com

Empire Surveying & Consulting, Inc.
PO Box 12
Hayden, ID 83835-0012

THE “WHAT AM I DOING HERE?” CORNER!!

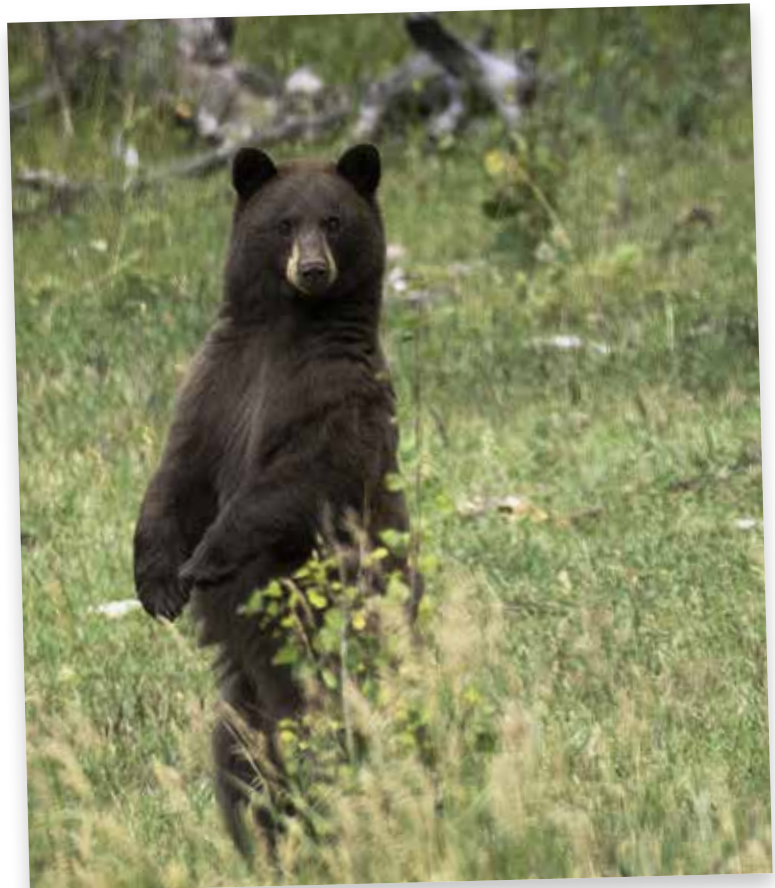
Several years ago I needed to corner search for a couple of corners in preparation for a contract. I researched the original notes and acquired the corner recordation form for the beginning corner and headed to the field. On parking the truck at the closest point to the corner I put together everything I needed and started on a half mile hike to the closest corner which had been remonumented.

I finally reached the corner and quickly checked the monument and bearing trees and noticed a whooshing sound. Looking around and then up I saw three large ravens flying around in circles over my head. Having identified the sound I took out my compass and proceeded up the very brushy hill to the section corner, that I needed to search for, at the top of the ridge. I could hardly see 10 to 15 feet in front of me through the brush. Halfway up the hill I could still hear the whooshing sound of the bird's wings but couldn't see them anymore so I figured they were still down where I started. I continued up the hill all the time hearing the whooshing sound.

As I got close to the top of the ridge I could see that the brush was beginning to thin out and it looked pretty open. As I worked my way out of the brush I could still hear the whooshing sound and I also heard a popping sound. I looked up the hill and 60 feet away is a very large black bear standing on his hind legs, his teeth bared, and the hair on his back standing up. He was at least as tall as I am, over 6 feet, and looking at the large body had a lot of fat stored up. He definitely outweighed me. The whooshing sound I had been hearing was him woofing at me and the popping sound was him snapping his teeth together.

I froze where I was standing, in waist deep brush, and I thought this is where I was going to have the battle of my life. I had a sandvik, six-inch blade, in my hand and I thought I could get one good swing in before I had to wrestle with the bear. Then as my head cleared I thought I should bend over and kiss my rear goodbye.

The bear continued to woof and snap his teeth and the thought of dropping to the ground and getting into a ball came into my mind but as I looked down I decided the brush was too thick to reach the ground. I decided to move over to a tree and cut a few limbs off the lower end so I could climb it. I took a swing with the sandvik and took about 10 branches off. I then realized that this seemed like a challenge to the bear and I quickly looked to see if he was coming but to my surprise he hadn't moved an inch. I then looked at the tree



to see it was a six inch hemlock. No challenge for a 400 pound bear to push it over. I decided it was me and my sandvik against huge odds so I looked at the bear and it was his move. He woofed at me, snapped his teeth, and dropped to the ground with the fat on his body rolling downhill towards me. I said goodbye to myself. Suddenly he stood back up and was two feet further to his left on the hill side. Ok, fake charge, now for the real charge. He woofed, snapped his teeth, and dropped to the ground again and as before he moved two feet to his left. After what seemed to be hours and way too many fake charges he was approximately 100 feet to my right. Suddenly he woofed, snapped his teeth and dropped to the ground running downhill into the brush. Before you could say "bye" I was out of the brush and standing about 100 feet up the hill. I listened to him breaking brush as he was heading downhill and I stood in silence as I tried to get my heart out of my throat.

After standing on the hillside, for what seemed to be 30 minutes and listening to make sure he wasn't coming back I turned to look for the section corner that should be within 100 feet of where I was standing. Suddenly I heard a noise that sounded like something walking towards me coming from the other side of the ridge so I stopped and listened. Within a few minutes I saw a bear coming over the ridge and coming straight at me. My heart was once again in my throat. As he came closer I could see that he was a small bear, probably 3 years old, and I knew I could out wrestle him. I noticed that he was going to pass within seven feet of me and if I took one step back there would be a large snag between us. As I stepped back my pants hit some brush and brought both me and the bear to a frozen position. He was looking straight at me, legs spread out with his head close to the ground, and after a couple of minutes he turned and ran back over

the hill. Now I had a small bear on the other side of the ridge and a very large bear below me as my thoughts of finding the corner that day was no longer on my mind. Suddenly I heard a voice saying "what are you doing here?." I answered "I don't know" and the voice replied "do you want to fight one of these animals?" My only reply was "NO" and I turned 450 and headed for the truck while I could.

The mile back to the truck was the most nervous mile I ever walked. Every black stump I saw along the way made me jump into a defensive position with the sandvik raised above my head. When I got to the truck I sat in the seat for a very, very long time before I finally settled down enough to drive home without swerving if I saw something black along the road.

Steve Staab PLS, 1982 ✦

ISPLS CALL FOR ARTICLES

And we are in need of surveying related articles for the *Gem State Surveyor*! Please submit any suggestions or articles in electronic form to the ISPLS office at info@idahosppls.org or tottens@amsidaho.com. ✦

FRONTIER PRECISION
How You Measure Matters

Mel Philbrook
GEOSPATIAL TECHNICAL
ACCOUNT MANAGER
An Employee-Owned Company

5569 West Kendall Street | Boise, ID 83706
208.955.0049 | 800.523.6408
720.273.9182 / Direct
mel@frontierprecision.com
www.frontierprecision.com

ND | SD | MN | CO | AK | MT | ID | HI | WY | UT | OR | WA

2020 CONFERENCE

The 2020 Conference was held February 25-28, 2020 in Nampa Idaho at the Nampa Civic Center, just in the nick of time, as the next month Idaho was under a “stay at home” order!

We had 214 people attend. We want to thank our six exhibitors and two sponsors:

EXHIBITORS

Bonneville Blueprint Supply
Monsen Engineering
GeoTerra, Inc
Kuker-Ranken
landproDATA
Idaho State University

SPONSORS

Carlson Software
Monsen Engineering

We want to thank those who attended the annual Auction and Banquet. With your generous help we were able to raise \$42,165 for future scholarships!! And our thanks to Jeremy Fielding and his committee for the great job they did getting donations!

We recognized two fellow surveyors this year:

- **Keith Brooks, 2019 Distinguished Service award**
- **Shane Remer, 2019 Surveyor of the Year**

See page 8 for more details on these honors.

We had a bit of fun on Wednesday night of the conference with the Second Annual Cornhole Contest, a fundraiser run by the ISU student club. Who knew surveyors could be so competitive?

Finally we also held a Legislative Reception during the conference. We had almost 30 legislators attend our reception over the two hours on February 25 at Beside the Bardenay. It was a great opportunity to let legislators know about our issues and to see our faces. ☺



**ISPLS Student
Scholarship
winners
Kirk Reichling
and Joseph
Renaldo**





Accepting late registrants and/or registrations for the Spring semester now.

Unmanned Aerial Systems

Intermediate Technical Certificate (ITC)

Why UAS?

As the unmanned aircraft systems (UAS) industry continues to grow exponentially, the benefits of gaining an education specific to UAS have become apparent. The College of Western Idaho plans to be a leader in UAS curriculum by launching a program that will provide state-of-the-art courses and practical instruction necessary for graduates to become UAS industry professionals.

Why CWI?

Our curriculum offers hands-on flight experience using industry standard aircraft and photogrammetry software. Students will learn to operate unmanned aircraft, process captured data properly, fly UAS missions as part of a crew, cultivate an appreciation for industry standard safety protocols, as well as develop a strong foundation of aviation fundamentals.

Program Outcomes

Possess an excellent understanding of FAA regulations
Perform flight operations with regards to airspace, weather and safety
Understand, analyze and interpret GIS data as it relates to UAS
Capture and process UAS data
Assess UAS security and privacy issues and implement solutions

Who Utilizes UAS?

- Public service and Safety
- Agriculture and Forestry
- Architecture and Construction
- Civil Engineering and Land Surveyors
- Marketing and Sales
- Natural Sciences

Key Courses

- Flight Theory and Flight Lab I & II
- Mission Planning
- GIS Basics and Remote Sensing
- UAS Privacy and Security
- Digital Imagery

Need More Info?

Contact: Tim Schuh
208.562.2360
timschuh@cw.edu



Achieve More!

<http://cw.edu/program/unmanned-aerial-systems>

STANDARDS OF PRACTICE – BRIAN J. ALLEN, PLS

I came across an interesting document a few years back while perusing the old ISPLS website. The document was entitled “Minimum Standards,” adopted by the ISPLS at its general membership meeting on March 21, 1992.

Being of the curious sort, I read the document. While it contained a great deal of helpful information and guidelines it was obviously out of date. Without any upkeep by the ISPLS, the document not only failed to keep up with our changing technologies, but also did not reflect any changes in statutes, practices, or expectations since its adoption over 25 years ago. Just as important, when looked at through a perspective of potential litigation and disciplinary actions against surveyors, the “Minimum Standards” were a potential liability even to those professionals practicing at the highest levels of professionalism and competence. After discussing these issues, the ISPLS Board of Governors determined it was necessary to end any reliance on the outdated document and appointed a committee to write a new “Standards of Practice” guidance document.

While “Minimum Standards” sound good for our profession, do we really want a “minimum” level of competence to be the standard that professionals hold themselves to? Wouldn’t it be better, not only for the profession, but for the public if we aimed higher? I think so, as does our Board of Governors.

Boundary surveying has long been recognized as one of the original respected professions, and deservedly so. Respected professions have defining characteristics; among these are accountability, specialized education and knowledge, autonomy, and agreed upon standards of practice maintained through professional associations. Professional autonomy and written standards need to be addressed in Idaho at this time and that is what our committee and the Board of Governors are trying to accomplish.

The new Standards of Practice document is being written with several concerns in mind. One of the prevalent concerns among many surveyors is their belief that their ability to apply professional judgment in their daily practice has been significantly reduced by not only new statutes and rules, but interpretations of existing rules and statutes which occasionally seem to contradict sound practices and limit the use of professional judgment. A divergent view is that the current rules and statutes do not adequately define, in sufficient detail, all aspects of our daily practice making it difficult for the licensing board to bring enforceable actions against surveyors not practicing at a proficient and competent level. Both sides have understandable arguments.

The Standards of Practice will consist of several parts: a main document and several addendums that focus on the contents of records of surveys, corner perpetuation records, subdivision plats, and condominium plats. This format will hopefully make the document simpler, easier to use, and will make future modifications more manageable.

As previously stated, one of the defining characteristics of a profession is the creation and maintenance of standards of practice by its professional society. Contained within the new document is the commitment that “these Standards will be regularly reviewed and modified by the Idaho Society of Professional Land Surveyors to maintain the needs of the profession, changing technologies, and expectations of the public.”

ISPLS is made up of individual professional land surveyors and the society needs the input, effort, and support of all surveyors to create and maintain these standards for the betterment of our profession. It is easy to get involved, contact your section director, any officer, committee member, or board member. We need and value your participation, suggestions, and ideas in creating and maintaining these professional Standards of Practice.

We have posted these draft standards on our website (idahospls.org) under the Members section or you can contact the office for them. ☎

May 5-7, 2020 CLASS CANCELLED

Geodetic Leveling Class
Emmett County Fairground 4-H Building
2199 S. Johns Ave.
Emmett, ID 83617

THIS CLASS WILL BE RE-SCHEDULED IN NOVEMBER. The workshop consists of classroom instruction and hands-on field exercises showing how to plan, perform, and process bar-code leveling observations suitable for submission to the National Geodetic Survey.

Note: The field procedures taught can be applied to all leveling to improve the precision of your leveling. This training meets ITD Term Agreement requirements. ☉



It's all at your finger tips...
Gain access to Records of Survey, CPFs, Parcels Data, Plat Documents, and much more! Get the job done quickly with outstanding results.
Start your FREE trial now!

landproDATA
landproDATA.com

ISPLS Board of Governors are sworn into office at the 2020 Conference by Stewart Ward, NSPS Representative



The Board of Governors meets prior to the 2020 Conference



ISPLS CALL FOR PICTURES

We are looking for great pictures depicting surveyors and surveying situations around the state for use on both our website and the *Gem State Surveyor*. The pictures have to be high quality, in a tif or jpeg file, and should not be long shots of anything (close-ups are preferred). We also need permission to use them now or in the future! Please submit to the ISPLS office at info@idahosppls.org or tottens@amsidaho.com. ☉

The Most Connected GNSS Receiver

The SP80 offers a unique combination of integrated 3.5G cellular, Wi-Fi and UHF communications with SMS, email and anti-theft technology.

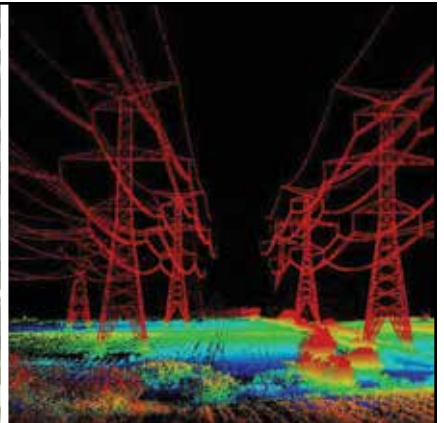
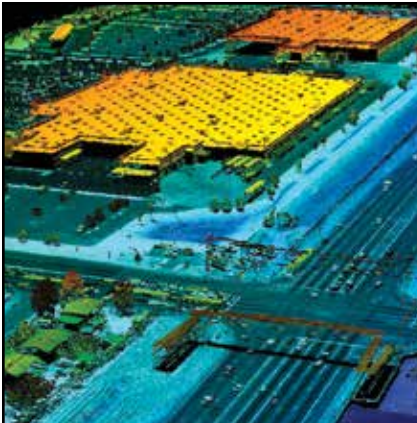
SP80

Features:

- Patented Z-Blade Technology
- 240-channel 6G ASIC
- Hot-swappable batteries
- Internal TRx UHF radio
- 3.5G cellular modem
- Built-in WiFi communication
- SMS and email alerts
- Anti-theft technology
- Backup RTK
- RTK Bridge
- eLevel Technology
- Trimble RTX correct services



Contact Troy Langston
800-821-0672



- Digital Aerial Photography
- LIDAR
- Mobile Mapping
- Topographic Mapping
- Orthorectified Imagery



aero-graphics

GEOSPATIAL SERVICES

40 West Oakland Avenue, Salt Lake City, UT 84115 · PHONE: 801-487-3273 · FAX: 801-487-3313

MINUTES | BOARD MEETING | FEBRUARY 25, 2020

Present:

Dan Determan (NOAA), Ryen Johnson (ITD), Adam Thayer, Stewart Ward, Steve Staab, Coy Chapman, Brian Allen, Mark Hokanson, Tom Judge, Chris Harmison, Tyson Glahe, Steve Frisbie, Jeremy Fielding, John Russell, Doug Burney, Glenn Bennett, Joe Canning, Kevin McGuire, Hunter Edwards, Teri Ottens (Staff).

Chapman opened the meeting at 9 am and called for introductions.

Kevin McGuire is the proxy for Rob Stratton, Northern Section.

Minutes:

Motion: Ward moved to approve the minutes as presented. Hastings seconded. Passed unanimously.

Conference Progress Report:

2020 - Staff presented the budget report with the hope of a good profit for our coffers. She outlined the schedule.

2021 - Montana - Revenues are a concern with a joint conference. Ward stated that they are open to a joint conference this year in Montana, followed by a joint conference in Idaho the year after. Discussion followed on the benefits of a joint conference versus the lower revenues. Some benefits are the interaction with other surveyors, better speakers because of a bigger budget.

Moscow - Staff reported we can book the conference in Moscow the last half of the third week in February 2021 or the first half of the fourth week

Motion: Hastings moved to abstain from a joint conference this year and schedule the third week in Moscow for the 2021 conference. Allen seconded. Passed unanimously.

NSPS Report:

Ward reported on:

- MOU has been signed and sent
- Geo education request
- Spring meeting is in early April - Kim Leavitt will be attending
- Fall meeting is in Tulsa and Ward will be attending
- Surveyors Week - March 15-21

Internal Marketing Committee:

GSS - Feilding reported we are still looking for an editor. The job description was reviewed, and possible prospects were discussed.

Membership - There will be a list after the conference to the board once it is updated.

Awards - Chapman announced that the awards went to:

Shane Remer, Bonneville County - Surveyor of the Year

Keith Brooks, BOR - Distinguished Service Award

Education:

Geodetic Class - Determan indicated that a Certificate of Completion will be sent out after the class. This class will meet the ITD Term Agreement requirements and could become an annual class to offer. There was discussion on limiting the class numbers and what to do if there are a lot more registrations than we expect. We can possibly plan other classes if we get more than expected.

Scholarship - Discussion on better management of the program, and better marketing the scholarships at ISU and other items to push the scholarships. Is there a greater need for non-traditional students?

The applications need a total overhaul and we need to review the requirements for the applications, the due dates, the amounts we are willing to allocate, and more.

Thayer said he would take it on and discussed having one application for everyone, putting it online, and making decisions about amounts based on the need of the applicants and the quality of the application.

Motion: Hasting moved to award both scholarships at the at-large amount of \$500. Staab seconded. Passed unanimously.

External Marketing:

MOU - Canning was present to discuss the joint MOU between ACEC, ISPE and ISPLS. He is hoping to have representatives from each to determine recommendations on who is on our board. This is due to the change in the process where people can nominate themselves and the Governor does not have to take the joint group's recommendations. Frisbie volunteered to serve as the ISPLS representative and Ward and Chapman will be on the committee.

HB 446/QBS - There was discussion on the bill and its progress and some of the reasons to tell legislators why it is not good.

HB 318 - A bill increasing IBOL's licensing power and allows the governor to move any licensing board under IBOL.

Statute of Limitations - Working with ISPE, ACEC and ISPLS to return to a rule that puts a statute of limitations on complaints to the board.

Hastings reported that the state surveyors are putting together an inventory of state laws.

CONTINUED

MINUTES | BOARD MEETING | FEBRUARY 25, 2020

Judge talked about upcoming issues they will be talking about this week:

- Language updates
- Door hanger
- Electronic Recordings - This rule is gone due to the reregulation order and we are working for a way around it.
- Proposed Schedule on proposed legislation - Allen presented the following schedule to stay active and involved in legislation:

Spring BOG Meeting (Feb)

- On-going legislative issues update with Board Staff.
- Exchange of Legislative problem statements and proposed solutions between IPELS and ISPLS (prior to conference BOG meeting)
- IPELS Staff and ISPLS Legislative committee exchange details and research related to the problem statement.

Summer BOG Meeting (May)

- IPELS and ISPLS exchange preliminary language minimum 2 weeks prior to BOG meeting
- Progress report from Legislative Committee to BOG
- ISPLS BOG decides whether to support, disapprove of or request amendments to proposed language.
- Legislative committee and IPELS Staff work within Board and BOG parameters to refine proposals. Results transmitted to IPELS prior to June meeting.

Fall Meeting (Aug)

- IPELS to transmit final language after Board retreat.
- Final BOG action required, with written decisions to IPELS
- Legislative Committee and Board Staff continue to meet as proposal goes through the Legislative process.

Winter meeting (Dec)

- Changes by DFM or LSO are communicated.
- Testimony coordination between Board Staff and ISPLS leadership begins.

This schedule will be used to try and get in front of legislation, not behind it and will allow Sections to get their input in early, not later. Discussion followed.

Chapman said the ISPLS Board has a right and responsibility to bring up issues and propose legislation whether the licensing board wants it or not. Surveyors with issues needs to take them to their Section, which should bring them to the Board.

Education (continued):

Trig Star - Staab will be getting out an educational directive in the next few weeks on how to do this program in the high schools. Results are due to NSPS in June. Russell encouraged everyone to participate in this program.

Future Cities - Bennett encouraged the board to look to be involved in this program next year. This was referred to the Southwest Chapter for

monitoring. Hasting reported that their chapter just participated at the STEM event in Boise. They talked to 2000 people that day about surveying. He would like to make a sand table for next year.

NSPS Student Scholarship - Chapman asked Thayer to follow up on our previous commitment to match the national grant and encourage students to apply at the national level.

ISU Invitation - Feilding committed to attending the ISU evening of celebration to recognize our contribution last year.

Innovation Committee:

Glahe said he is getting up to date on several new innovations coming up.

Administrative Committee:

Frisbie reported on the following balances:

Checking - \$81,184

Money Market - \$71,000

Savings - \$80,461

Board travel and staffing are our biggest expense. He reviewed the new travel policy as well.

Policies - Changes being worked on include:

- Past president as a voting board member
- Scholarship policies (being revised)
- Legislation Calendar (legislative committee)
- Travel expenses to inactive chapters

Young Surveyors:

Thayer reported on the upcoming meeting this week which will include:

- Business Speaker
- Surveyor's Panel
- Giving away a surveyor's vest

He invited everyone to attend. Chapman encouraged young surveyors to get on every ISPLS committee.

WestFed:

Fielding reported that their meeting is conflicting with ours. He will obtain the minutes and report back.

Staff Report:

The report was reviewed and acknowledged.

Standards of Practice:

Allen sent out a draft and asked the board to review and comment. The goal is to have this adopted within a year. It will be introduced at the annual meeting tomorrow.

Next Meetings:

May 2 - Pocatello

August 22 - Coeur d'Alene (see Glahe)

December 5 - Boise

Adjournment:

The meeting adjourned at 1:58 pm to go into a meeting with the state licensing Board. Additional persons present were John Elle and Dusty Obermayer (IBPEPLS Board Members).

Respectfully Submitted: Teri Ottens ☩

ISPLS BOARD



EASTERN SECTION DIRECTOR

Brian Allen

Allen Land Survey
bwireallen@gmail.com
208-852-2839

GSS EDITOR

Hagen Beckstead

Foresight Surveying
hagen@foresightsurvey.com
208-339-4246

IEPLS LIASON

Glenn Bennett

Civil Survey Consultants, Inc.
elkwatcher@outlook.com
208-375-5389

PRESIDENT

Coy Chapman

Sawtooth Land Surveying
coy@sawtoothls.com
208-329-5303

VICE PRESIDENT

Jeremy Fielding

Eagle Land Surveying
pls12220@yahoo.com
208-861-7513

TREASURER

Steve Frisbie

T-O Engineers
sfrisbie@to-engineers.com
208-323-2288

DAVID THOMPSON DIRECTOR

Tyson Glahe

Glahe & Associates, Inc.
tglahe@glaheinc.com
208-265-4474

MAGIC VALLEY SECTION DIRECTOR

Chris Harmison

EHM Engineers, Inc.
charmison@ehminc.com
208-734-4888

PAST PRESIDENT/ SW SECTION DIRECTOR

Jerry Hastings

Ada County Development Services
jhastings@adaweb.net
208-287-7912

QBS REPRESENTATIVE

Joseph Jones

Idaho Transportation Department
joe.jones@itd.idaho.gov
208-334-8949

STATE CST COORDINATOR

Robert Liimakka

Idaho State University
liimrobe@isu.edu
208-373-1807

EXECUTIVE DIRECTOR/ SECRETARY

Teri Ottens

ISPLS
tottens@amsidaho.com;
trowley@amsidaho.com
208-658-9970

HIGH COUNTRY DIRECTOR

John Russell

Russell Surveying, Inc.
jr_rsi@frontiernet.net
208-630-4737

BIGWOOD DIRECTOR

Bruce Smith

Alpine Enterprises Inc.
bsmith@alpineenterprisesinc.com
208-727-1988

CLEARWATER DIRECTOR

Stephen Staab

Lewis-Clark State College
sstaab@usamedia.tv
208-816-0095

NORTHERN SECTION DIRECTOR

Robert Stratton

Stratton Land Surveying
rob@strattonls.com
208-687-2854

YOUNG SURVEYOR REP

Adam Thayer

Dioptra
adam@dioptrageomatics.com
208-757-1435

NSPS REPRESENTATIVE

Stewart Ward

DIOPTRA LLC
stewart@dioptrageomatics.com
208-251-3962



GEM STATE SURVEYOR

Idaho Society of Professional Land Surveyors
5460 W. Franklin, #A
Boise, ID 83705
