

✦ GEM STATE SURVEYOR ✦

JANUARY | 2020



TABLE OF CONTENTS

Calendar of Events	2
President's Message	4
Legislative Update	5
Membership Dues	6
Benchmark Survey Class	9
ISPLS Call for Pictures	9
Legislative Reception Invite	9
Conference Schedule	10
Scholarship Announcement	11
ISPLS Call for Nominations	11
ISPLS Call for Articles	11
Mentoring in the Age of Automation	12
ISU Grant Update	15
Board Meeting Minutes	18
Board Members	19

Visit our webpage for the latest news

www.idahospls.org

FOLLOW US :

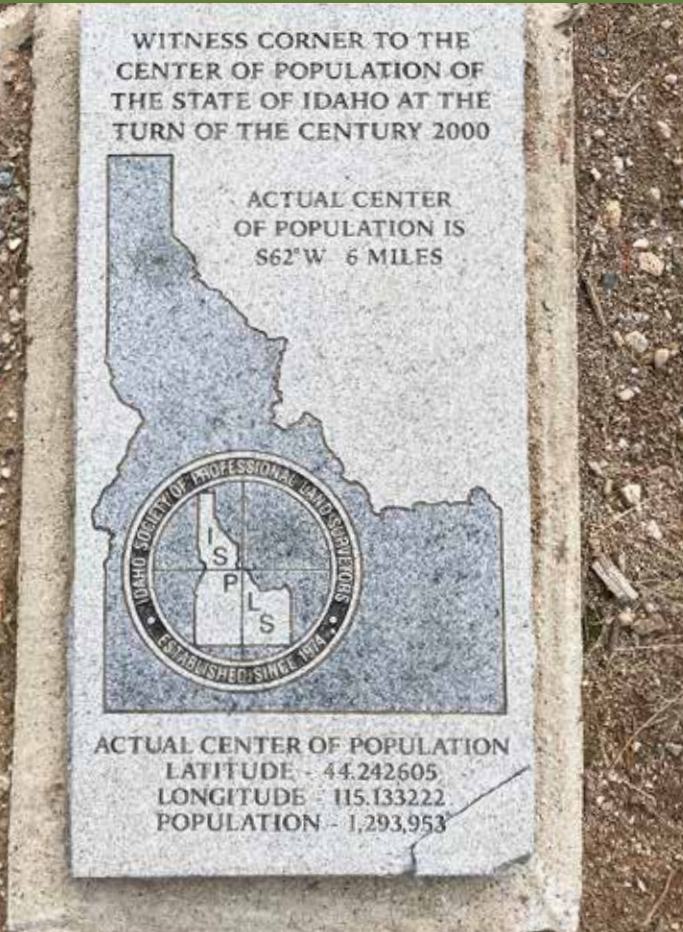
[www.facebook.com/](http://www.facebook.com/idahosocietyofprofessionallandsurveyors/)

idahosocietyofprofessionallandsurveyors/

CALENDAR OF EVENTS

- February 25 Board Meeting, Nampa
- February 25-28 ISPLS Conference, Nampa
- February 25 ISPLS Legislative Reception, Beside Bardenay, Boise
- May, 2020 Board Meeting, TBD
- August, 2020 Board Meeting, TBD
- December, 2020 Board Meeting, TBD

BELOW: Marker located in the Park Creek Overlook northwest of Stanley on Highway 21



EDITOR: Vacant

ISPLS is seeking a volunteer to serve as the **Editor of the GSS**. If interested, Please submit an email to President Coy Chapman at coy@sawtoothls.com

PUBLISHER: AMS

The *Gem State Surveyor* is a quarterly publication of the Idaho Society of Professional Land Surveyors. It is not copyrighted and articles may be reprinted with due credit. Any article, letters, or other contributions will be accepted and considered for publication regardless of the author's affiliation. Statements of opinion which may be expressed may not necessarily represent the official views of ISPLS unless specifically noted. Article submission must be in digital form. Photographs must be high resolution jpeg files.

ADVERTISING POLICY

Advertisements should be submitted in digital form to fit an 8 ½ x 11 page.

Rates for color are as follows:

Advertisements should be submitted in digital form, JPG file (minimum 300 dpi), to fit an 8 ½ x 11 page. Rates are as follows (updated 2013):

Size	Dimensions	B&W Full Year	B&W Single Issue	COLOR Full Year	COLOR Single Issue
Full Page	7.25" w x 9.75" h	\$720.00	\$180.00	\$800.00	\$200.00
1/2 Page	7.25" w x 4.7" h	\$360.00	\$90.00	\$400.00	\$100.00
1/4 Page	3.46" w x 4.7" h	\$180.00	\$45.00	\$200.00	\$ 50.00
Business Card	3.46" w x 2.25" h	\$90.00	\$22.50	\$100.00	\$ 25.00

Sustaining members 10% off above prices.

Publishing an advertisement does not imply endorsement of the advertiser by ISPLS and the editor reserves the right to reject advertising which may be in poor taste or in opposition to the policies of ISPLS.

The *Gem State Surveyor* will advertise equipment stolen from any of our members free of charge. ISPLS will pay \$50.00 for information leading to the arrest and conviction of the perpetrator.

Idaho Society of Professional Land Surveyors

P.O. Box 7886
Boise, Idaho 83707
(208) 658-9970



How You Measure Matters

The Trimble SX10 total scanning station effortlessly expands your capabilities. This versatile solution collects any combination of high-density 3D scan data, enhanced Trimble VISION imaging, and high-accuracy total station data – so you capture exactly what you need – saving you time while increasing productivity. At Frontier Precision, we believe the most important measurement is your bottom line. To learn how Frontier Precision can help your business run smarter, visit www.frontierprecision.com.



Frontier Precision, celebrating 30 years!
1988-2018
AN EMPLOYEE-OWNED COMPANY

Designed to redefine surveying,
imaging, high-speed 3D scanning,
and how efficient you work.

Want more information? Contact:

Mel Philbrook | Geospatial Technical Account Manager
mel@frontierprecision.com
208.955.0049 | 720.273.9182 Direct / Cell

Frontier Precision | 5569 West Kendall Street | Boise, ID 83706



The TRIMBLE® SX10
High-Density 3D Scan Data
Enhanced Trimble VISION Imaging
High-Accuracy Total Station Data



PRODUCTS | TRAINING | REPAIR | RENTALS

LEARN MORE www.frontierprecision.com/SX10

PRESIDENT'S MESSAGE JANUARY 2020

I don't know about ya'll, but I've had an extremely busy summer and the winter doesn't seem to be slowing things down yet. Your Board of Governors recently had their December meeting during which we discussed main topics. I want to highlight a few and to ask for your input on them:

Our 2020 conference is well established and I look forward to seeing you three. For our 2021 conference we have an opportunity to do a joint conference with MARLS in Missoula Montana. This is something the BOG is considering at our next BOG meeting at the conference. Let your Section Director know if you feel this would be in the Society's best interest or not and just as importantly why you feel that way.

It's with a heavy heart that I announce the resignation of Aaron Rush acting as our GSS's editor. Over the years in dealing with Aaron I have found him to be a wonderful example of a true professional in this amazing field of professional land surveying. Aaron we appreciate all you have done for the society. I know you'll contribute what you can to our profession as new opportunities present themselves and in your daily work. To the rest of our Society I appeal to your professionalism and ask that you step up to fill this vacancy in our society. Don't wait or assume that somebody else is going to do it for us/you! To keep this society running we need to have individuals step up and do what's in the best interest of professional land surveyors throughout the Great State of Idaho.

I am concerned about the number of inactive sections within our society—at this last BOG meeting over half of the state was not represented. This means many of you within Idaho are not having your voice heard on issues that effect the profession you work in everyday! The Society deals with many issues which affect all professional land surveyors in the State of Idaho. To note A few we are working on right now are the 2020 and 2021 state legislation, the ISPLS governing policies and a standards of practice in Idaho which will guide our profession in a self regulatory manner, so the licensing board does not need to continually legislate us into submission.

At this last meeting your BOG asked that the policies be updated to reflect our desire for inactive section to become active sections by supporting anyone willing to organize and represent their section. To quote our Society's Treasurer Steve Frisbie, "The world is run by those who show up!" If you want your profession to operate in a manner consistent with your perspectives, show up and be heard!

Lastly I'd like to say Merry Christmas and a Happy New Year to all in our society.

Sincerely,

Coy Chapman, PLS

President Idaho Society of Professional Land Surveyors

LEGISLATIVE UPDATE - BY TOM JUDGE

The Board has combined all legislative changes for 2020 into one proposal. The proposal contains both general housekeeping and substantive changes to survey laws.

The housekeeping measures are as follows:

- **CLARIFICATION FOR RETIRED AND FACULTY RESTRICTED LICENSES:** clarifies that practice on a retired license is not allowed and that faculty licensees do not need to obtain a seal as they do not sign and seal engineering documents.
- **REMOVAL OF RENEWAL NOTICE REQUIREMENTS:** clarifies that licensees are responsible to renew their license or certificate prior to expiration. The Board desires to migrate to electronic notification instead of sending in paper renewal notices for those who have an email address. Renewal notices will continue to be sent by paper for those without email addresses.
- **CLARIFICATION THAT BOTH LICENSEES AND CERTIFICATE HOLDERS ARE UNDER THE BOARD'S JURISDICTION:** For purposes of disciplinary actions, the amendment clarifies that certificate holders such as interns are also under the Board's jurisdiction and must abide by the Board's ethics rules.
- **REMOVAL OF LANGUAGE TO VOTE TO REINSTATE A LICENSE:** 54-1221, Idaho Code was not updated when the number of board members increased from 5 to 7. The existing language is now obsolete. Rather than update the language, the Board wants to rely on normal voting procedures for voting on Board business rather than specific language. A majority of members present must vote to pass any motion of the Board. Reinstatements should follow this process.

The substantive changes for surveyors are:

1. **ADDITIONAL OPTIONS FOR MONUMENTS:** Under current law, surveyors are limited to setting 1/2-inch or 5/8-inch diameter iron or steel rods unless circumstances preclude using such monuments. This amendment will allow the use of other suitable monuments in a wider variety of situations.
2. **REPEAL OF OUTDATED DAMAGE PROVISIONS:** These 100-year-old sections within 54-12 relate to damages caused by public surveyors. They are superseded by other laws and are being repealed.
3. **CENTER QUARTER CORNER:** This change will require the surveyor to find or set the center quarter corner monument when subdividing the section.

They will also be required to record a corner record memorializing the evidence and history of the corner. This will lend stability to property boundaries by preventing the perpetual 'movement' of the center of section and the corners that depend on its location.

4. **OFF-LINE CLOSING CORNERS:** Our current laws do not clearly instruct surveyors to set a monument at the 'true' intersection when a junior closing corner is used as control. The new language will remove any uncertainty.

5. **DEFINITIONS:** The following definitions are being considered.

a. **Professional Boundary Land Survey Definition:** The definition of Professional Land Surveying was expanded in 2015 to recognize the services surveyors traditionally provide. This term is used to delineate those services that are the exclusive domain of Professional Surveyors.

b. **Survey Monuments Used as Control:** The definition is being added to clarify which monuments require Corner Records.

In anticipation of the new Datums and State Plane Projections in 2022, the Board will pursue an update to Title 55, Chapter 17 in the 2021 Session. The draft language for this proposal has been approved by the Board for negotiation purposes. The rationale for the rewrite and general plan is as follows:

- 55-1701 currently establishes the name of our coordinate system and defines the zones. This approach requires us to amend our statutes every time the NGS makes a related change. The proposed law will refer to the standards and systems established and maintained by the NGS. This approach will also

CONTINUED

FRONTIER PRECISION

NO | SD | WA | CO | AR | MT | ND | WY | UT | OR | NV

Mel Philbrook
 GEOSPATIAL TECHNICAL
 ACCOUNT MANAGER
 An Employee-Owned Company

5569 West Kendall Street | Boise, ID 83706
 208.955.0049 | 800.523.6408
 720.273.9182 / Direct
 mel@frontierprecision.com
 www.frontierprecision.com

HOW YOU MEASURE MATTERS

Bonneville
Blue
Precision Solutions

Chad Powell
chad@bonnevilleblue.com

208.521.5403 • C
208.522.0010 • O
208.522.9960 • F

1802 Curtis Ave.
Idaho Falls, ID 83402

www.bonnevilleblue.com

eliminate the need for 55-1702 where the zone names are established and 55-1705 where zones are defined.

- 55-1703 establishes the meter and US Survey foot as the official units of measure for the northing and easting ordinates of our State Plane Coordinate systems. The NGS is currently working with the National Institute for Testing and Standards to deprecate the US Survey foot. Again, the new law will refer to the unit in use by NGS.
- 55-1704 deals with coordinates involving two zones. This language will need to be retained.
- 55-1706 and 55-1707 are not currently used.
- 55-1708 makes it clear that coordinates in land descriptions are supplemental. It is essential to retain this language. Coordinates should not be artificially elevated by statute in the dignity of calls. The language does need to be amended to conform to other statutes.
- 55-1709 prevents purchasers or mortgagees from being forced to rely on coordinates as the only control on any boundary or part thereof. Again, this is proposed to be retained. ⊕

MEMBERSHIP DUES ARE DUE!

Over the next few days you will be receiving your dues renewal notice for the upcoming year. We hope you recognize the value of your membership and what your Society has accomplished recently including:

- Representation on the Idaho Licensing Board for Professional Engineers and Professional Land Surveyors
- Representation at the national level through NSPS and Young Surveyors
- Representation at WestFed
- Communication with state legislators, including a legislative reception (planned for February 28, 2020)
- A close working relationship with the ISU surveyor program
- Quarterly publication of the GSS
- Annual conference to fulfill your CE requirements
- Other classes throughout the year including floodplain and benchmark topics
- Local sections to bring your comments, concerns and observations to the Board of Governors
- And more!

We look forward to serving your professional needs for another year! ⊕

It's all at your finger tips...
Gain access to Records of Survey, CPFs, Parcels Data, Plat Documents, and much more! Get the job done quickly with outstanding results.
Start your **FREE** trial now!

landproDATA
landproDATA.com

THE WORLD'S FASTEST GNSS RTK ROVER

Introducing the **Leica GS18 T**, the first true tilt compensation solution that is immune to magnetic disturbances. The bubble no longer has to be centered. As a matter-of-fact, you can forget about the bubble. In addition to that, the system is calibration-free, so no long-winded procedures are required.

Just turn it on and go.



First True
Tilt Compensation



Works Out Of The Box,
Calibration-Free



Immune To Magnetic
Disturbances

www.ForgetTheBubble.com

For more information please contact:



Bonneville
Blue
Precision Solutions

Leica
Geosystems

Boise Location: 208 376 5710 Idaho Falls Location: 208 522 0010



Surveying posters are Available! Just contact the ISPLS office at (208) 658-9970 or info@ispls.org and we would be happy to get them to you. ☺

SURV-KAP®

THE LANDMARK NAME IN SURVEY PRODUCTS
Exceptional Customer Service

- REBAR & PIPE CAPS
- CONCRETE MARKERS
- SURVEY MONUMENTS
- SECTIONAL ROD MONUMENTS
- ACCESS COVERS
- WASHERS & NAILS
- SUBSURFACE MAGNETICS
- STAMPING TOOLS
- SURVEY TOOLS & ACCESSORIES



CALL OR ORDER ONLINE!



520-622-6011 • 800-445-5320 • FAX 520-792-2030 • SURV-KAP.COM

BENCHMARK SURVEY CLASS

Throughout Idaho, many National Geodetic Survey (NGS) benchmarks were originally installed on structures of the State Highway System; many of these structures are nearing the end of their service life. The Idaho Transportation Department (ITD) has interest preserving, at existing Order of Accuracy if possible, benchmarks that will be destroyed when structure replacement or roadway widening projects are constructed. ITD seeks to have more consultants qualified and available in the C-1b Term Agreement category that can complete the needed geodetic leveling to preserve these important NGS benchmarks.

The ISPLS, in conjunction with ITD, is working with two NGS Regional Advisors to provide in-state geodetic leveling training to reset/reestablish NGS benchmarks at 2nd order and 3rd order accuracy. The class(es) is(are) tentatively scheduled to be held in April 2020 in Boise. Class size will be limited.

Class fees are not yet established, but will be set to cover class costs. If you or your firm are interested in attending this training, please respond to the ISPLS Survey Monkey from Teri Ottens dated December 6, 2019 before the end of the calendar year 2019. ☎

ISPLS CALL FOR PICTURES

We are looking for great pictures depicting surveyors and surveying situations around the state for use on both our website and the *Gem State Surveyor*. The pictures have to be high quality, in a tif or jpeg file, and should not be long shots of anything (close-ups are preferred). We also need permission to use them now or in the future! Please submit to the ISPLS office at info@idahospls.org or tottens@amsidaho.com. ☎

Bonneville
Blue
Precision Solutions

Josh POWELL
jpowell@bonnevilleblue.com

208.484.7386 • C
208.376.5710 • O
208.376.2951 • F

10933 W. Emerald
Boise, ID 83713

www.bonnevilleblue.com

YOU ARE INVITED TO THE 3RD ANNUAL LEGISLATIVE RECEPTION

February 25, 2020, 4:30-6:30 p.m.
Beside the Bardenay, Boise, ID

Come and meet with your legislators over food and drink and help us promote the surveying profession! This reception is being held in conjunction with the 2020 ISPLS Conference, February 25-28, 2020 at the Nampa Civic Center.

2020 Annual Conference

February 26-28, 2020

Schedule at a Glance

(subject to change)

Tuesday, February 25

ISPLS BOARD MEETING (THESE MEETINGS WILL BE OFF-SITE AT THE BEST WESTERN)

MEETING WITH IBPEPLS BOARD

Wednesday, February 26 Classes

ELEVATION CERTIFICATE--SCOTT VANHOFF, FEMA

VERTICAL DATUM CHANGES FOR FLOODPLAIN MANAGEMENT/BENCHMARK ISSUES--DAN DETERMAN, NOAA

THE INTERSECTION WHERE INFRASTRUCTURE AND TECHNOLOGY MEET--BONNEVILLE BLUE

GROUND TO GRID COORDINATES--FRONTIER PRECISION

CORNHOLE TOURNAMENT--ISU STUDENT CHAPTER

LEGISLATIVE, NEW LAWS & COMPLIANCE ISSUES--TOM JUDGE, IBLPEPLS

Thursday, February 27 Classes

SURVEYING BUSINESS AND PRACTICES--DR. RICHARD ELGIN

EARLY AMERICAN SURVEYING EQUIPMENT--DR. RICHARD ELGIN

YOUNG SURVEYORS MEETING--ADAM THAYER

SCHOLARSHIP BANQUET AND AUCTION

Friday, February 28

LEGISLATIVE, NEW LAWS & COMPLIANCE ISSUES, CONT.--TOM JUDGE, IBLPEPLS

EASEMENTS--VICTOR BORTON

WATER LAW UPDATES--MICHAEL LAWRENCE, GIVENS PURSLEY

To Register

Registration materials will be sent out shortly or you can register online at:

<http://idahospls.org/?body=events>

Or by calling the ISPLS office at 208-658-9970.

Call for Scholarship Auction Items

ISPLS needs donations for the Annual Scholarship Banquet and Auction. Please notify the ISPLS office if you are planning on bringing an item. Remember this helps assure the FUTURE OF SURVEYING!!!!

SCHOLARSHIP ANNOUNCEMENT

Awards available for the 2020 Spring Semester ranging in amounts from:

\$500.00 TO \$2,350.00

Deadline: December 31, 2019

ELIGIBILITY

Applicants must be second, third, or fourth year students majoring in Civil Engineering Technology or Surveying and Geomatics Engineering Technology at an Idaho College or University, enrolled as a full-time student (defined as 12 credit hours), and have a minimum of 3.0 GPA.

APPLICATION REQUIREMENTS

1. Completed application form

2. Written statement: Attach a written statement (500 words) addressing your educational and career goals, your plans to finance your education, and why you are deserving of this scholarship.

3. Written essay: Attach a written essay (500 words) answering the following questions: What three things interest you the most about surveying? What does ethics have to do with the surveying? What do you think the surveying industry will look like in 10 years?

4. Transcripts: Include with this application a copy of your most recent transcripts and a copy of your current class schedule (unofficial is acceptable).

Applications available at:

<http://www.idahosppls.org/education/scholarships>

Return applications to: Idaho Society of Professional Land Surveyors, PO box 7886, Boise, ID 83707 or scan and email to tottens@amsidaho.com no later than the 5:00 pm on the day of the deadline. ☒

CALL FOR IDAHO SOCIETY OF PROFESSIONAL LAND SURVEYORS AWARD NOMINATIONS

The ISPLS Board of Governors is accepting nominations for three recognition awards as listed below. Nomination forms can be found at <http://www.idahosppls.org/?body=honors>.

Awards nominations are due no later than 5:00 p.m. on January 10, 2020.

AWARDS AVAILABLE

- Award for distinguished service to the land surveying profession
- Surveyor of the Year award
- Friend of the Society ☒

ISPLS CALL FOR ARTICLES

And we are in need of surveying related articles for the *Gem State Surveyor*! Please submit any suggestions or articles in electronic form to the ISPLS office at info@idahosppls.org or tottens@amsidaho.com. ☒

FRONTIER PRECISION

Jay Wilson
GEOSPATIAL SALES REPRESENTATIVE
An Employee-Owned Company

12658 Interurban Avenue South | Seattle, WA 98168
206.294.5196 | 800.523.6408
208.841.2735
jayw@frontierprecision.com

HOW YOU MEASURE MATTERS

MENTORING IN THE AGE OF AUTOMATION

By Adam Thayer, LSI

Originally Published in the November 2019 Issue of *xyHt Magazine*

As old-timers retire and fewer young people enter surveying, we are at a turning point where mentoring is crucial to the future of the profession, but we will need to adapt to mentor well. Land Surveying is an ever-evolving profession. New technology, new coordinate systems, and new datums all make it difficult to keep up with the latest trends and the newest developments. Even for someone like me who grew up in the age of technology, at times it is difficult to wrap my head around.

Because of GNSS, robotic total stations, UAS, and 3D scanners, fieldwork is being completed with less manpower. For many companies, the days of three- or four-person crews are no more. Firms can now get the same or comparable production from one or two field members versus an entire crew of surveyors.

Thus, the typical surveyor's evolution from rodman to instrument man to crew chief is happening much less often because there is no crew to evolve in.



Mentoring Not Button-Pushing

The truth is that automation and technology cannot perform all of the fieldwork or—importantly—make the critical decisions that a person can. Fundamentally, measuring is what we do, but it is such a small part of the product that we deliver.

Understanding the laws and principles along with having the ability to measure and calculate accurately and precisely is what makes a good surveyor. On top of that, a field crew must know what monuments to look for and why, and why we measure this and not that.

However, the increase of automation and decrease in crew sizes and the number of people needed to execute certain tasks is making it much more difficult to provide direct mentorship that teaches these skills and knowledge.

Time and time again, I hear the argument that one-person crews will be the downfall of our profession and that mentoring is being lost. I believe that on-the-job training is still one of the most important aspects in the surveying profession; in fact, one cannot become a licensed professional without it.

Yet, teaching field personnel to set up equipment and collect data is not mentoring and can be a dangerous practice without it. Surveying and geomatics are so much more than pushing buttons. The instruments that we use have changed significantly; however, the analysis and interpretation of the measurements has not.

New Tech, New Mentoring

We must continue to train the greenhorns to become good surveyors, but we may not be able to train them in the same way we used to.

Mentorship should not be lost, but it does need to be done differently. Mentors have always been integral to the process of becoming a land surveyor, and that is not going to change. Firms are being forced to adapt to find a way to teach the next generation of surveyors. The profession is not dying—it is changing—and we must embrace the change.

I will share with you my company's approach to mentoring and show you how our team members are learning in the absence of conventional mentoring.

Mentoring with a Small Staff

First, let me give you some background on our firm. We are a small surveying company serving southeast Idaho.

CONTINUED



Accepting late registrants and/or registrations for the Spring semester now.

Unmanned Aerial Systems

Intermediate Technical Certificate (ITC)

Why UAS?

As the unmanned aircraft systems (UAS) industry continues to grow exponentially, the benefits of gaining an education specific to UAS have become apparent. The College of Western Idaho plans to be a leader in UAS curriculum by launching a program that will provide state-of-the-art courses and practical instruction necessary for graduates to become UAS industry professionals.

Why CWI?

Our curriculum offers hands-on flight experience using industry standard aircraft and photogrammetry software. Students will learn to operate unmanned aircraft, process captured data properly, fly UAS missions as part of a crew, cultivate an appreciation for industry standard safety protocols, as well as develop a strong foundation of aviation fundamentals.

Program Outcomes

Possess an excellent understanding of FAA regulations
Perform flight operations with regards to airspace, weather and safety
Understand, analyze and interpret GIS data as it relates to UAS
Capture and process UAS data
Assess UAS security and privacy issues and implement solutions

Who Utilizes UAS?

- Public service and Safety
- Agriculture and Forestry
- Architecture and Construction
- Civil Engineering and Land Surveyors
- Marketing and Sales
- Natural Sciences

Key Courses

- Flight Theory and Flight Lab I & II
- Mission Planning
- GIS Basics and Remote Sensing
- UAS Privacy and Security
- Digital Imagery

Need More Info?

Contact: Tim Schuh
208.562.2360
timschuh@cw.edu



Achieve More!

<http://cw.edu/program/unmanned-aerial-systems>



We provide a variety of services, including boundary and ALTA surveys, topographic surveys, construction staking, land planning, and HDS and UAS surveying.

Currently our team consists of two licensed surveyors, two survey interns, and a handful of technicians. Each member of our team wears many hats and has the opportunity to manage their own projects with varying levels of responsibility and oversight.

Most of our projects are overseen by the PLS, with the LSIs getting the opportunity to manage the daily tasks and oversee the technicians who aid in the performance of the fieldwork, drafting, and calculations.

Our survey technicians are taught from the beginning the basics of both office and field tasks. Setting up the instrument; doing data collection, calculations, analysis, drafting; writing legal descriptions; and doing terrain modeling are all duties that each of the team members share.

On our team, there is no differentiation between field and office personnel because we all spend time on data collection as well as in the office producing the deliverables.

For me, this is the best of both worlds. We do not have dedicated crews, so we all get to share ideas and learn from one another. This dynamic allows experiences to be shared throughout the entire team. And although one-person crews are sometimes necessary, we have found ways to make sure all our experiences can still be used as teachable moments.

Our staff meets regularly to share any problems and solutions we have encountered on projects, and through this dialogue we have the opportunity to learn new skills and how to handle difficult situations. The culture we have established through our team allows us to have an open dialogue and provides everybody the opportunity to mentor one another. I believe that this model has allowed us to create a quality product and become well-rounded surveyors.

Making College Work in Idaho

Many of our technicians are currently students or are graduates of the local college, Idaho State University (ISU), that offers both bachelor's and associate's degrees in surveying and geomatics. These individuals have a vested interest in the profession and have shown that they are dedicated to learning and have the ambition to become a surveyor.

In the past few years, many of our technicians have graduated, passed the FS exam, and are now either licensed or gaining the experience necessary to become licensed.

More and more universities are offering their courses online as the demand and shortage of licensed surveyors continues to grow. Like Idaho, many states are requiring a four year bachelor's degree for a person to become licensed. ISU's four-year program is offered both completely online as well as in a traditional classroom setting. For distance-learning students taking courses that include a laboratory component, the student's local mentor, often their employer, is responsible for conducting and supervising the laboratory activities.

Idaho's licensing board recognizes the value of those serving as mentors because they provide a critical function that makes the program accessible for a broader group of students. In this upcoming year, the board is proposing that mentors would be eligible for up to eight continuing education credits per year. These online programs are great for individuals who have surveying experience and are seeking licensure but lack the education component that is often required.

Another helpful program offered by ISU is the Technician Resource Initiative-Practical Online Development, or TRIPOD. Through TRIPOD, survey technicians can earn college credits and gain additional certifications while working in their current positions. Ultimately, students will be prepared to take the NSPS Certified Survey Technician Examinations, Levels 1, 2, or 3.

As college programs incorporate distance learning into their curriculum, mentoring has a significant impact on the students' ability to achieve the hands-on learning that is required.

I am grateful for the mentors from early in my career who have challenged and inspired me to become a better professional. And now in this new age of automation, while my company's solutions don't cover all possibilities, we have had success in training the next generation of surveyors with our model of mentoring.

Quality mentors are crucial to the advancement of the profession, and we must make mentoring a priority to ensure the future success of the surveying profession. ☺

ISU GRANT UPDATE

In 2018 ISPLS dedicated \$40,000, in conjunction with additional funds from other industry partners, to serve as a match to a Department of Labor grant to begin promoting surveying as a career.

Idaho Department of Labor, has been working with the Surveying and Geomatics Engineering Technology (SGET) program at Idaho State University (ISU) in identifying skill gaps and training options for a critical technician workforce in Idaho: individuals who work closely with Professional Land Surveyors (PLS). This effort primarily targets incumbent technical workers in land surveying. The project will help incumbent workers who wish to advance their careers through online education and training that prepares them for national certification through the National Society of Professional Surveyors (NSPS).

The initial phase has been to develop a marketing campaign to promote the program and raise interest. Funds have been dedicated to developing a message and distributing it through targeted digital marketing, social media, billboards, magazines, radio, and direct mail.

Between January and June of 2019, \$3608 was spent for advertising, for a total of around \$10,000 since the grant began. Some results include:

- **Outreach program to 32 incumbent surveying technicians**
- **Seven enrolled in Fall 2019**
- **Starting Spring 2020 enrollment**

One area they would like input from ISPLS members on how to increase outreach and participation in the program. If you have employees or know someone interested in surveying and want to start with a two year program please contact ISU, Robert Liimakka at liimrobe@isu.edu. ☎



The Most Connected GNSS Receiver

The SP80 offers a unique combination of integrated 3.5G cellular, Wi-Fi and UHF communications with SMS, email and anti-theft technology.

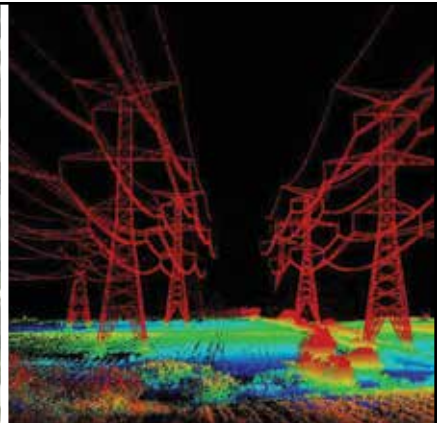
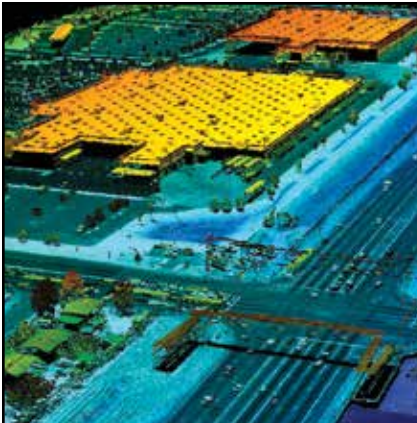
SP80

Features:

- Patented Z-Blade Technology
- 240-channel 6G ASIC
- Hot-swappable batteries
- Internal TRx UHF radio
- 3.5G cellular modem
- Built-in WiFi communication
- SMS and email alerts
- Anti-theft technology
- Backup RTK
- RTK Bridge
- eLevel Technology
- Trimble RTX correct services



Contact Troy Langston
800-821-0672



- Digital Aerial Photography
- LIDAR
- Mobile Mapping
- Topographic Mapping
- Orthorectified Imagery



aero-graphics

GEOSPATIAL SERVICES

40 West Oakland Avenue, Salt Lake City, UT 84115 · PHONE: 801-487-3273 · FAX: 801-487-3313

MINUTES | BOARD MEETING | AUGUST 24, 2019

Present:

Brian Allen, Tom Judge, Rob Stratton, Steve Frisbie, Glenn Bennett, Jeremy Fielding, George Yerion, Adam Thayer, Stewart Ward, Ron Hodge, Teri Ottens – Staff.

Fielding opened the meeting at 9:03 am.

Changes to the Agenda:

None

Declaration of Proxy Votes:

George Yerion has the proxy for Chris Harmison.

Minutes:

Motion: Stratton moved to approve the minutes as presented. Allen seconded. Passed unanimously.

Conference Report:

2019 – Staff reported that the logistics are set up for the event including the facility, hotel and the related legislative reception.

The Conference Committee will be:

Ron Hodge
Eric Striker
Eric Howard
Ladd Cluff

Possible Speakers

- We have a main speaker – Victor Valayes, and land attorney.
- Author for the POB – Chris Kline – is a possibility
- Tom Judge – Wants a full day
- Speaker on new ground penetrating radar – Sub-surface Instruments

Plan Meeting with Licensing Board on February 25

2021 – Staples and proposal to Montana. The proposal delineates some suggestions on dividing up the revenues. Their board is meeting at the end of September and will have some input for us after that.

This will be on the December agenda.

Committee Updates:

NSPS Report – Ward reported on the following:

- MOU Amendment – There was discussion on the term “mutually agreed upon” increase in dues and what needs to be done. The board would like to see the current MOU to understand the amendments. Staff will send out to the board and give a deadline on comments and approval of the amendment. All comments and approval will be due by September 9th.

- Certified Floodplain Surveyor – Ward explained that other states have done this and can be used as a model. He asked if Idaho would like to see this and would we want to do it ourselves, or have NSPS administer the program. After discussion it was decided to look at having NSPS administer the program and possibly bring it to Idaho. Ward was directed to let NSPS know.

Internal Marketing Committee

- Membership – list, get updated to section groups and distinguish
- GSS – went over outline

Legislation – Judge reported on the following:

Statute of Limitations – Judge explained the Supreme Court case that indicated that the statute of limitations is gone. There was discussion on the position of ISPLS – go after legislation on our own or try this year to do it ourselves.

We will work with Hastings and Frisbie on working with ACEC and ISPE on this issue.

Motion: Stratton moved to authorize Chapman to sign the letter to the licensing Board to pursue limitations in the future. Allen seconded. Passed unanimously.

It was decided to move the remaining items to the end of the agenda as they will take some time.

Education Committee:

Benchmark – Staff reported there is a conference call on Monday, August 26 with NOAA and ITD to talk about bringing this training to Idaho on a regular basis. She will report back after the call.

ISU Grant – It was reported that billboards, radio, Facebook. Better communication on what is happening with the grant.

Scholarships – There are two high school scholarships applied for.

Motion: Hodge moved to give both scholarships at \$500 each for high school students. Ward seconded. Passed unanimously.

It was decided to develop a sub-committee on scholarship review only. Ward, Thayer, Judge, volunteered. We will ask Jeannie Liimakka as well and ask for volunteers from other chapters, especially up north. We need a

CONTINUED

MINUTES | BOARD MEETING | AUGUST 24, 2019

guideline on what scholarships we have and when they are due.

Administration Committee - Frisbie reported on:
Financial Report - Frisbie reviewed the following issues:

- Negative balance
- Transfer of \$40,000 for the ISU grant

Motion: Stratton moved to accept the financial report. Allen seconded. Passed unanimously.

Policy Changes - Frisbie reviewed changes:

- Housekeeping changes
- General practices language added by attorney
- Executive Director to Executive Secretary
- Credit card and bank card use

There were other changes but Frisbie will finalize the changes and send out a document that shows the changes. We will give a deadline to return all comments.

NSPS Young Surveyors - Thayer reported on:

- Meeting in Orlando, FL next month for Young Surveyors
- Working on involving more young surveyors to serve on the ISPLS committees
- At our conference he will get with the committee to work on a tract of classes and activities

Staff Report - The report was reviewed and acknowledged.

Old Business:

Appointment of Board Members - Staff explained that ACEC has already submitted a name to fill the engineering slot. We will send a letter of endorsement on Monday for Bennett, with Hodge as an alternate.

Legislative Issues:

Judge continued his report:

Right of Entry - Proposing to repeal three sections written in 1919 that no longer apply

Red Tape Reduction Act - They are reducing rules and regulation to get rid of "inward" facing regulation, reducing repetitive phrases, obsolete rules, etc.

54-1215, 16, 17 - Housekeeping stuff to update the language.

Definitions -

Corner Records
Professional Boundary Land Survey
Monuments - replacement
Public Land Survey Corner - Professional land survey corner set by GLO or BLM and you do a rehabilitation/entry on it (not to include lot corners but does include block corner).

Allen asked to change the definition—what is different from these corners and others?

54-1237 - What is acceptable as use of monuments in Idaho Code

55-1604 - Change undefined terms to more commonly used terms, adding the center quarter corner to the lists of corners requiring to have a record, electronically.

55-1607 - Useless language being removed

55-1608 - Quarter corner, three workable accessories (not always possible and we want language removed)

Subdivision survey language - Is this duplicative?
Controlling corners and when to monument - Requirements

Terrestrial Reference Frame - Point to NGS's website rather than changing state law to match each time.

Judge reviewed some other minor changes.

Allen expressed that he feels there is not enough time to review all these changes before the session. There was discussion on how best to get member input. We will send emails directly to members with response back to the Legislative Committee.

There was discussion on a process to get input before the session. The Legislative Committee will commit to meet and get language to the state board prior to September 17.

Allen stressed that this is why we need Standards of Practice from ISPLS to help direct a lot of the practices that are being done.

Next Meeting:

December 7, Boise.

Adjournment:

The meeting was adjourned at 3:56 p.m.

Respectfully Submitted:

Teri Ottens ☺

ISPLS BOARD



PRESIDENT

Coy Chapman

Sawtooth Land Surveying
coy@sawtoothls.com

VICE PRESIDENT

Jeremy Fielding

Eagle Land Surveying
Pls12220@yahoo.com
208-861-7513

TREASURER

Steve Frisbie

T-O Engineers
sfrisbie@to-engineers.com
208-323-2288

PAST PRESIDENT

Jerry Hastings

Ada County Development Services
jhastings@adaweb.net
208-287-7912

EASTERN SECTION DIRECTOR

Brian Allen

Allen Land Survey
allenlandsurvey@qwestoffice.net
208-852-2839

SOUTHWEST SECTION DIRECTOR

Jerry Hastings

Ada County Development Services
jhastings@adaweb.net
208-287-7912

DAVID THOMPSON DIRECTOR

Tyson Glahe

Glahe & Associates
tglahe@glaheinc.com
208-265-4474

HIGH COUNTRY DIRECTOR

John Russell

Russell Surveying
jr_rsi@frontiernet.net
208-630-4737

BIG WOOD DIRECTOR

Bruce Smith

Alpine Enterprises
bsmith@alpineenterprisesinc.com
208-727-1988

CLEARWATER DIRECTOR

Stephen Staab

Lewis-Clark State College
sstaab@usamedia.com
208-816-0095

NORTHERN SECTION DIRECTOR

Rob Stratton

Stratton Land Surveying
rob@strattonls.com
208-687-2854

SAWTOOTH DIRECTOR

Tom Taylor

Keller Associates
ttaylor@kellerassociates.com
208-542-6120

MAGIC VALLEY SECTION DIRECTOR

Chris Harmison

EHM Engineers
charmison@ehminc.com
208-734-4888

YOUNG SURVEYORS

Adam Thayer

Dioptra Geomatics
adam@dioptrageomatics.com

NSPS DIRECTOR

Stewart Ward

Dioptra Geomatics
stewart@dioptrageomatics.com

STATE CST COORDINATOR

Robert Liimakka

Idaho State University
liimrobe@isu.edu
208-373-1807

IEPLS LIAISON

Glenn Bennett

Civil Survey Consultants
gbennett@civilsurvey.net
208-861-1802

GSS EDITOR

Aaron Rush

Fox Land Surveys
arush@foxland surveys.com
208-342-7957

STAFF

Teri Ottens

info@idahospls.org
208-658-9970



GEM STATE SURVEYOR

Idaho Society of Professional Land Surveyors
5460 W. Franklin, #A
Boise, ID 83705
